

2018 KS2 Extended School Dashboard

for headteachers, senior leaders & teachers

Produce custom dashboards at
www.fftaspire.org

Mellers Primary School

LA Nottingham City DfE 8922158 Produced September 2018

What it is

The FFT Extended School Dashboard provides headteachers, senior leaders and teachers with a more detailed analysis of school performance.

The dashboard consists of five individual sections – Summary, Reading, Maths, Writing, GPS – and includes additional reports not found in the standard FFT School Dashboard.

What it tells you

Strengths and areas for improvement

How does attainment and pupil progress compare to the national average?

How are you performing in different subjects?

Do you have any under-performing groups of pupils?

How might the context of your school affect performance?

How does pupil attendance compare to the national average?

About the data shown

1 2 3

Actual results

Actual results for your school, using a range of measures such as averages and thresholds.



Gauges

These display headline indicators and whether actual results and pupils' progress are in line with, or significantly above or below, the national average.

ESTIMATED



1 2 3

Pupil progress

The value added progress that your pupils have made from one key stage to the next. FFT compares your actual results to the estimated results based on the progress of similar pupils nationally.



Statistical significance

Green plus signs and red minus signs highlight where either actual results or pupils' progress is significantly above or below the national average.



Trends

The dashboard analyses school performance over 3-5 years. Any significant year-on-year improvement is highlighted using an up arrow. Significant declines in performance are highlighted with a down arrow.



Strengths & weaknesses

These highlight key pupil groups and subjects where progress is above or below the national average.

Working in partnership with



Data sources

Generated from FFT Aspire which includes data sourced from the DfE (National Pupil Database) and data calculated by FFT. FFT is accredited as a DfE supplier to receive early access to ASP data. Headline performance indicators will be consistent with the DfE School Performance Tables and ASP.

Summary analysis

Reports included in this section

Overview
Attainment & progress
Pupil groups
Subjects
Disadvantaged pupils
Scatterplot
Confidential: Contains personal information
Context



Key indicators

- Average Scaled Score (Re, Ma)
- % Expected standard+ (Re, Wr, Ma)
- % Higher standard (Re, Wr, Ma)
- % Expected standard+ Reading
- % Expected standard+ Maths
- % Expected standard+ Writing
- % Expected standard+ Grammar, Punctuation & Spelling
- % Expected standard+ Science



Value added

Achievement is compared with similar pupils nationally. The FFT VA model uses prior attainment, gender and month of birth as a starting point.

Overview

KS2 Attainment 2018 · Actual results

31 pupils

KS2 Progress 2018 · Value Added

28 matched pupils

Average Scaled Score (Re, Ma)

% Expected standard+ (Re, Wr, Ma)

Average Scaled Score (Re, Ma)

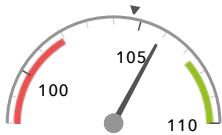
% Expected standard+ (Re, Wr, Ma)

105.9

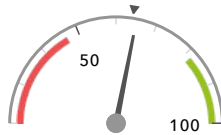
65%

+4.0 +

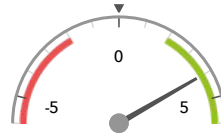
+16%



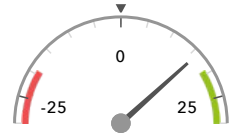
In line with the national average (104.7) ◀



In line with the national average (64%) ◀



Significantly above the national average (0) ◀



In line with the national average (0%) ◀

KS2 higher and lower performing pupil groups 2018

	Higher performing	Lower performing
Overall achievement pupil progress	SEN Support (9) + White (8) + Middle attainers (14) + ↑	
KS2 reading achievement pupil progress	SEN Support (9) + First language English (10) + ↑ White (8) + ↑	
KS2 writing achievement pupil progress	White (8) Summer Term (11) Male (16)	First language English (10) Autumn Term (5) Female (12)
KS2 mathematics achievement pupil progress	White (8) + SEN Support (9) + Autumn Term (5)	
KS2 grammar, punctuation & spelling achievement pupil progress	First language English (10) + Male (16) + Middle attainers (14) +	

Mellers Primary School

2018

KS2

VA

Attainment & progress

KS2 Attainment 2018

31 pupils

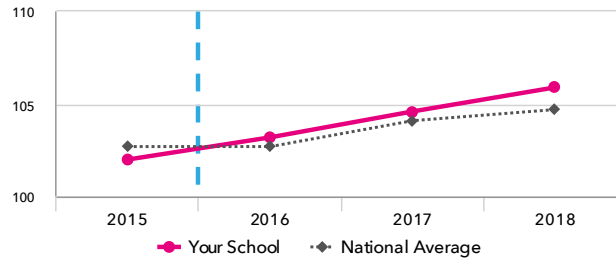
Average Scaled Score (Re, Ma)

105.9

FFT Rank



In line with the national average (104.7)



KS2 Progress 2018

28 matched pupils

Average Scaled Score (Re, Ma)

+4.0+

FFT Rank



Significantly above the national average (0)

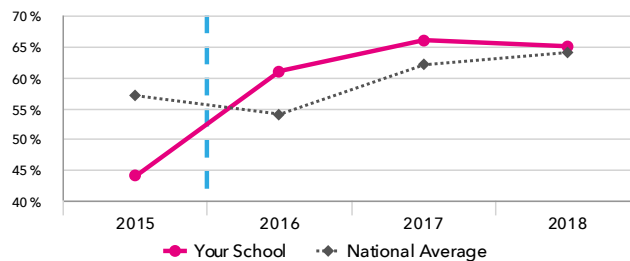
% Expected standard+ (Re, Wr, Ma)

65%

FFT Rank



In line with the national average (64%)



% Expected standard+ (Re, Wr, Ma)

+16%

FFT Rank



In line with the national average (0%)

KS2 performance summary

	Actual results			Pupil progress		
	2016	2017	2018	2016	2017	2018
Number of Pupils / % Matched	28	29	31	96%	93%	90%
% Expected standard+ (Re, Wr, Ma)	61%	66%	65%	+29% ↑	+16%	+16%
% Higher standard (Re, Wr, Ma)	0%	0%	0%	-2%	-2%	-3%
Average Scaled Score (Re, GPS, Ma)	103.4	105.2	105.7	+3.4 ↑	+2.8 ↑	+3.7 ↑
Average Scaled Score (Re, Ma)	103.2	104.6	105.9	+4.1 ↑	+2.6 ↑	+4.0 ↑
% Expected standard+ Reading	82%	69%	84%	+33% ↑	+7%	+22% ↑
% Higher standard Reading	14%	10%	39%	+3%	-1%	+24% ↑
Scaled Score Reading	104.3	103.1	107.5 ↑	+5.3 ↑	+2.1 ↓	+5.2 ↑
% Expected standard+ Writing	75%	76%	68%	+19% ↑	+8%	+0%
% Higher standard Writing	0% -	3%	6%	-6%	-3%	-1%
Scaled Score Writing	100.0	99.7	99.1	+3.1 ↑	+1.1	+0.9
% Expected standard+ Maths	79%	83%	74%	+29% ↑	+18%	+10%
% Higher standard Maths	4%	21%	13%	-5%	+2%	+3%
Scaled Score Maths	102.0	106.4 ↑	104.3	+2.6 ↑	+3.6 ↑	+2.8 ↑
% Expected standard+ Grammar, Punctuation & Spelling	75%	76%	74%	+20%	+8%	+9%
% Higher standard Grammar, Punctuation & Spelling	32%	21%	32%	+24% ↑	+6%	+16% ↑
Scaled Score Grammar, Punctuation & Spelling	105.2	105.4	106.5	+4.6 ↑	+2.1	+3.6 ↑
% Expected standard+ Science	79%	79%	74%	-	-	-
Average Point Score (Re, Wr, Ma)	-	-	-	-	-	-
% Level 4+ (Re, Wr, Ma)	-	-	-	-	-	-
% Level 4B+ (Re, Wr, Ma)	-	-	-	-	-	-
% Level 5+ (Re, Wr, Ma)	-	-	-	-	-	-

Mellers Primary School

2018

KS2

VA

Pupil groups

KS2 Pupil groups performance 2018

			Actual results			Pupil progress			High-to-low chart
Pupils			Average Scaled Score (Re, Ma)	% Expected standard + (Re, Wr, Ma)	% Higher standard (Re, Wr, Ma)	Average Scaled Score (Re, Ma)	% Expected standard + (Re, Wr, Ma)	% Higher standard (Re, Wr, Ma)	Pupil progress in Average Scaled Score (Re, Ma) visually from high to low
Summary	All Pupils >	31	105.9	65%	0%	+4.0 ⁺	+16%	-3%	SEN Support (9)
Gender	Male >	17	105.7	65%	0%	+5.0 ⁺	+23%	-1%	White (8)
	Female >	14	106.2	64%	0%	+2.8	+7%	-4%	First language English (10)
Prior Attainment	Higher attainers >	4	109.4	100%	0%	+0.7	+8%	-14%	Middle attainers (14)
	Middle attainers >	14	109.0 ⁺ ↑	86%	0%	+5.5 ⁺ ↑	+24%	-1%	FSM (15)
	Lower attainers >	10	100.5	30%	0%	+3.5	+8%	-0%	Autumn Term (5)
Pupil Premium	FSM (in last 6 years) >	21	106.6 ⁺	57%	0%	+4.7 ⁺	+11%	-3%	Male (16)
	Not FSM (in last 6 years) >	10	104.7	80%	0%	+2.7	+27%	-2%	FSM (in last 6 years) (19)
FSM	FSM >	17	106.6 ⁺	53%	0%	+5.2 ⁺	+10%	-3%	FSM (ever) (19)
	Not FSM >	14	105.3	79%	0%	+2.8	+22%	-3%	All Pupils (28)
FSM Ever	FSM (ever) >	21	106.6 ⁺	57%	0%	+4.7 ⁺ ↑	+11%	-3%	Summer Term (11)
	Not FSM (ever) >	10	104.7	80%	0%	+2.7	+27%	-2%	Joined before Y5 (26)
Term of Birth	Autumn Term >	7	108.3	57%	0%	+5.0	+2%	-2%	Spring Term (12)
	Spring Term >	12	105.7	58%	0%	+3.7 ⁺	+5%	-4%	Lower attainers (10)
	Summer Term >	12	105.1	75%	0%	+4.0 ⁺	+34% ⁺	-2%	First language not English (18)
SEN Group	SEN Support >	9	106.2 ⁺	56%	0%	+7.5 ⁺	+17%	-0%	Not FSM (13)
	EHC Plan >	2	-	0%	0%	-	-	-	Female (12)
	No SEN >	20	105.8	75%	0%	+2.6 ⁺	+15%	-4%	Not FSM (in last 6 years) (9)
EAL	First language not English >	19	104.6	74%	0%	+3.2 ⁺	+23%	-2%	Not FSM (ever) (9)
	First language English >	12	108.7	50%	0%	+5.7 ⁺	+3%	-4%	No SEN (19)
Mobility	Joined in Y5 or Y6 >	3	106.2	67%	0%	+7.2	+15%	-0%	Pakistani (10)
	Joined before Y5 >	28	105.9	64%	0%	+3.8 ⁺	+16%	-3%	
Ethnicity	White >	8	109.8 [↑]	100%	0%	+6.7 ⁺ ↑	+39%	-5%	
	Black Caribbean >	3	107.0	33%	0%	+5.1	-20%	-3%	
	Black African >	4	106.3	50%	0%	+4.3	+18%	-1%	
	Pakistani >	11	102.5	55%	0%	+1.8	+7%	-1%	
	Bangladeshi >	1	106.0	100%	0%	-2.0	+10%	-9%	
	Other Asian >	3	103.3	33%	0%	+2.5	+10%	-0%	
	Any Other >	1	110.5	100%	0%	+7.9	+41%	-1%	

Mellers Primary School

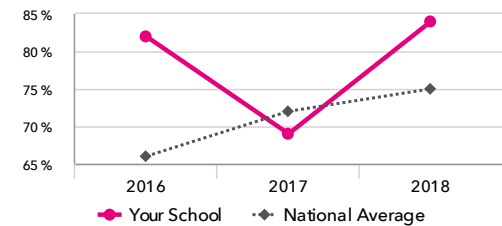
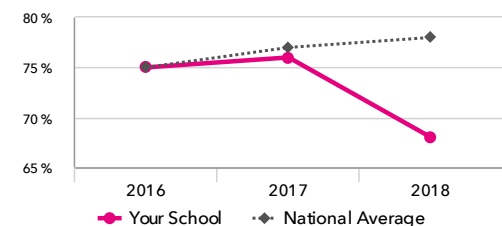
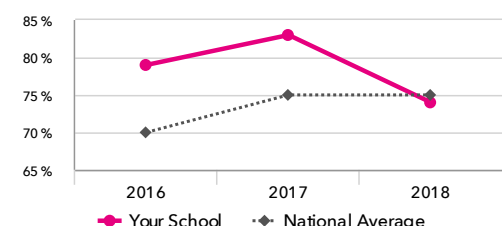
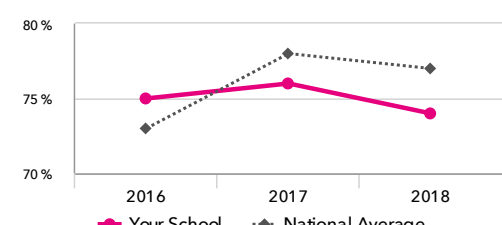
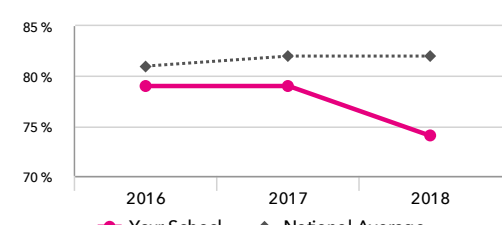
2018

KS2

VA

Subjects

KS2 subject performance 2018

	Actual results			Pupil progress			Actual results over time
	2016	2017	2018	2016	2017	2018	
Number of Pupils / % Matched	28	29	31	96%	93%	90%	
Reading							
% Expected standard+	82%	69%	84%	+33% + ↑	+7%	+22% +	% Expected standard+ Reading 
% Higher standard	14%	10%	39%	+3%	-1%	+24% +	
Scaled Score	104	103	108 ↑	+5.3 + ↑	+2.1 ↓	+5.2 +	
Level 4+	-	-	-	-	-	-	
Level 4B+	-	-	-	-	-	-	
Level 5+	-	-	-	-	-	-	
Average Point Score	-	-	-	-	-	-	
Writing							
% Expected standard+	75%	76%	68%	+19% ↑	+8%	+0%	% Expected standard+ Writing 
% Higher standard	0% ⊖	3%	6%	-6%	-3%	-1%	
Scaled Score	100	100	99	+3.1 +	+1.1	+0.9	
Level 4+	-	-	-	-	-	-	
Level 5+	-	-	-	-	-	-	
Average Point Score	-	-	-	-	-	-	
Maths							
% Expected standard+	79%	83%	74%	+29% + ↑	+18%	+10%	% Expected standard+ Maths 
% Higher standard	4%	21%	13%	-5%	+2%	+3%	
Scaled Score	102	106 ↑	104	+2.6 + ↑	+3.6 +	+2.8 +	
Level 4+	-	-	-	-	-	-	
Level 4B+	-	-	-	-	-	-	
Level 5+	-	-	-	-	-	-	
Average Point Score	-	-	-	-	-	-	
Grammar, Punctuation & Spelling							
% Expected standard+	75%	76%	74%	+20%	+8%	+9%	% Expected standard+ Grammar, Punctuation & Spelling 
% Higher standard	32%	21%	32%	+24% +	+6%	+16% +	
Scaled Score	105	105	107	+4.6 + ↑	+2.1	+3.6 +	
Science							
% Expected standard+	79%	79%	74%	-	-	-	% Expected standard+ Science 
Level 4+	-	-	-	-	-	-	
Level 5+	-	-	-	-	-	-	
Average Point Score	-	-	-	-	-	-	

Mellers Primary School

2018

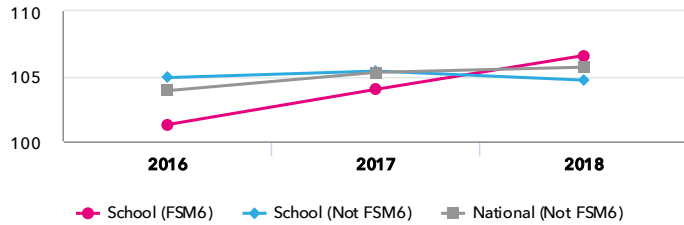
KS2

VA

Disadvantaged pupils

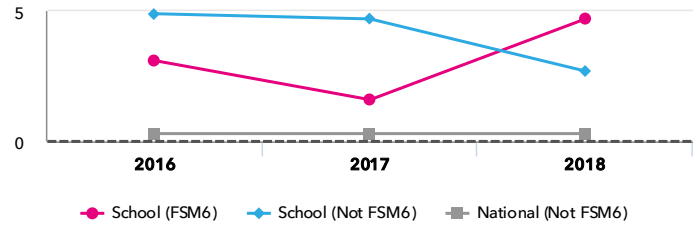
KS2 attainment for disadvantaged pupils 2018

Average Scaled Score (Re, Ma)



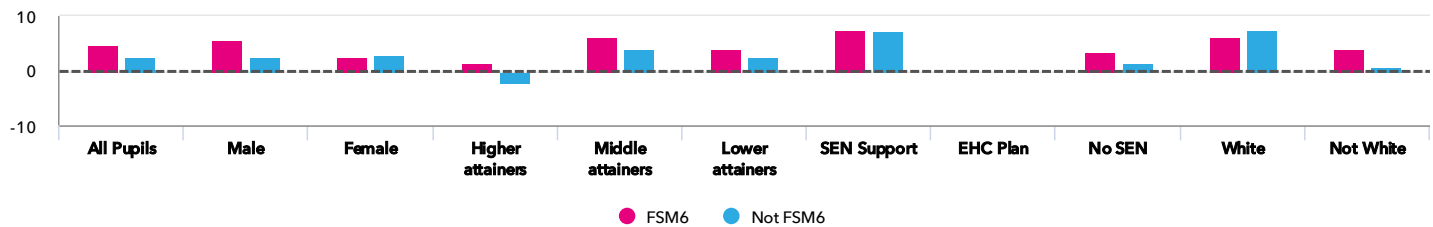
KS2 progress for disadvantaged pupils 2018

Average Scaled Score (Re, Ma)



Progress gap

Average Scaled Score (Re, Ma)

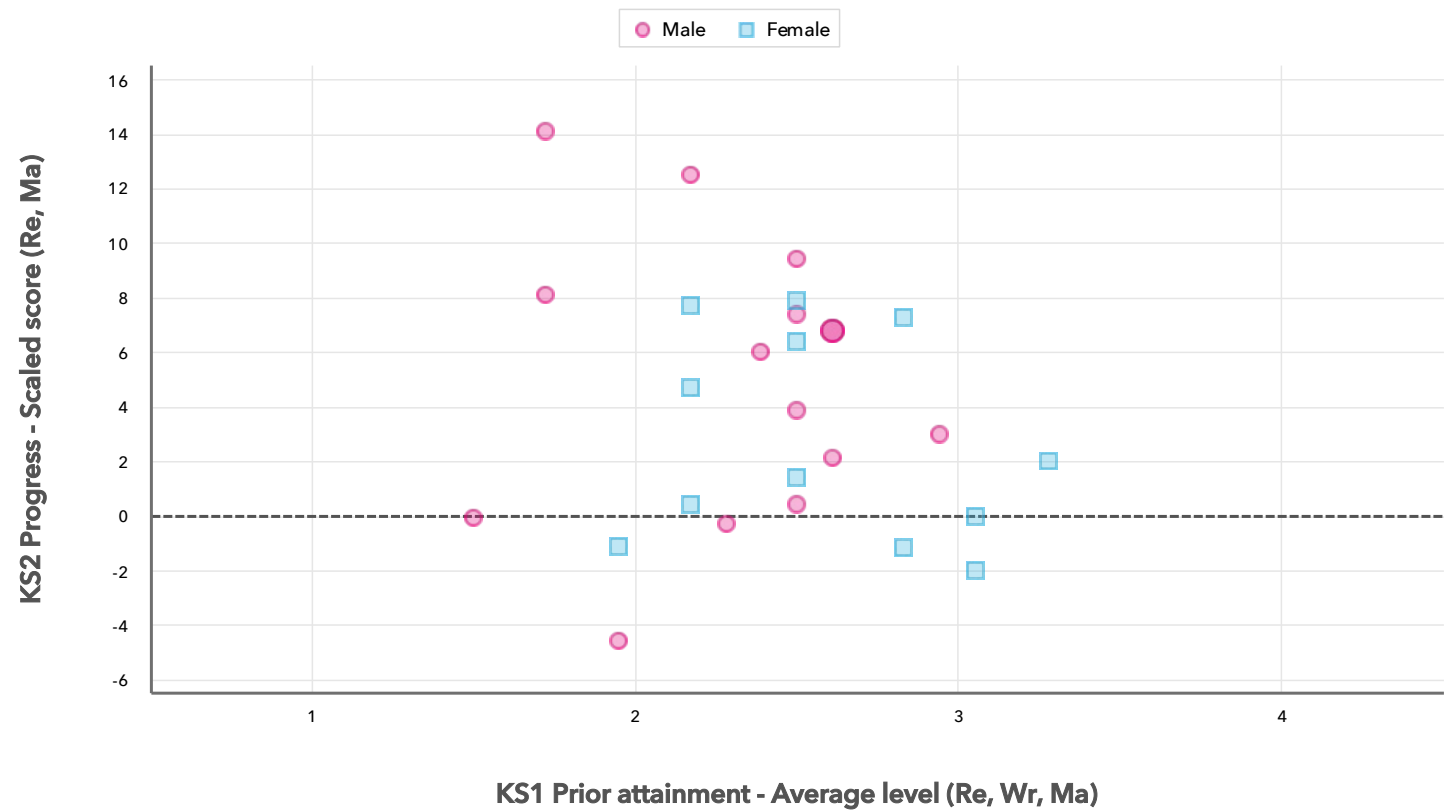


Attainment & progress

Pupils				Attainment			Progress		
				Average Scaled Score (Re, Ma)			Average Scaled Score (Re, Ma)		
		FSM6	Not FSM6	FSM6	Not FSM6	Gap	FSM6	Not FSM6	Gap
Summary	All Pupils	21	10	106.6 ⬆️	104.7	1.9	4.7 ⬆️	2.7	2
Gender	Male	14	3	106.9	100.8	6.1	5.7	2.5	3.2
	Female	7	7	106.1	106.3	-0.2	2.7	2.8	-0.1
Prior Attainment	Higher attainers	3	1	110.5	106	4.5	1.6	-2	3.6
	Middle attainers	10	4	109.1	108.8	0.3	6.1	4.1	2
	Lower attainers	6	4	101	99.8	1.2	4.1	2.5	1.6
SEN Group	SEN Support	7	2	106.3	106	0.3	7.6	7.2	0.4
	EHC Plan	2	-	-	-	-	-	-	-
	No SEN	12	8	106.8	104.3	2.5	3.3	1.4	1.9
Ethnic Group	White	5	3	111.9	106.2	5.7	6.2	7.4	-1.2
	Not White	16	7	104.6	104	0.6	4.1	0.4	3.7

Scatterplot

KS2 Pupil scatterplot 2018 31 pupils highlighted by Gender



Mellers Primary School

2018 KS2

Context

Context · Year 6 · 2017 / 2018

Absence · Year 6 · 2017 / 2018

			Pupils		Proportion	
					School	National
Summary	All Pupils	31			100%	100%
Gender	Male	17			55%	51%
	Female	14			45%	49%
Prior Attainment	Higher attainers	4			13%	31%
	Middle attainers	14			45%	35%
	Lower attainers	10			32%	29%
Pupil Premium	FSM (in last 6 years)	21			68%	30%
	Not FSM (in last 6 years)	10			32%	69%
FSM	FSM	17			55%	15%
	Not FSM	14			45%	85%
FSM Ever	FSM (ever)	21			68%	31%
	Not FSM (ever)	10			32%	69%
Term of Birth	Autumn Term	7			23%	33%
	Spring Term	12			39%	32%
	Summer Term	12			39%	35%
SEN Group	SEN Support	9			29%	15%
	EHC Plan	2			6%	3%
	No SEN	20			65%	82%
EAL	First language not English	19			61%	20%
	First language English	12			39%	80%
Mobility	Joined in Y5 or Y6	3			10%	7%
	Joined before Y5	28			90%	93%
Ethnicity	White	8			26%	74%
	Black Caribbean	3			10%	3%
	Black African	4			13%	6%
	Pakistani	11			35%	4%
	Bangladeshi	1			3%	2%
	Other Asian	3			10%	3%
	Any Other	1			3%	4%

			Pupils		Absence		Persistent absentees	
			School	National	School	National		
Summary	All Pupils	31	4%	4%	7%	5%		
Gender	Male	17	4%	4%	6%	6%		
	Female	14	4%	4%	8%	5%		
Prior Attainment	Higher attainers	4	1%	3%	0%	2%		
	Middle attainers	14	3%	4%	0%	4%		
	Lower attainers	10	5%	5%	10%	10%		
Pupil Premium	FSM (in last 6 years)	21	5%	5%	10%	12%		
	Not FSM (in last 6 years)	10	2%	3%	0%	3%		
FSM	FSM	17	5%	6%	12%	16%		
	Not FSM	14	2%	4%	0%	4%		
FSM Ever	FSM (ever)	21	5%	5%	10%	11%		
	Not FSM (ever)	10	2%	3%	0%	3%		
Term of Birth	Autumn Term	7	5%	4%	0%	6%		
	Spring Term	12	4%	4%	8%	6%		
	Summer Term	12	4%	4%	8%	5%		
SEN Group	SEN Support	9	5%	5%	11%	10%		
	EHC Plan	2	11%	7%	50%	20%		
	No SEN	20	3%	4%	0%	4%		
EAL	First language not English	19	3%	4%	0%	5%		
	First language English	12	5%	4%	17%	6%		
Mobility	Joined in Y5 or Y6	3	10%	6%	50%	15%		
	Joined before Y5	28	4%	4%	4%	5%		
Ethnicity	White	8	2%	4%	0%	6%		
	Black Caribbean	3	7%	5%	33%	9%		
	Black African	4	5%	3%	25%	3%		
	Pakistani	11	4%	5%	0%	6%		
	Bangladeshi	1	2%	5%	0%	5%		
	Other Asian	3	7%	4%	0%	4%		
	Any Other	1	3%	4%	0%	6%		

Your evaluation – Summary analysis

2018

Key Stage 2

Use this page to assess your performance, evaluate your interventions and summarise key actions for next year. Keep your evaluation clear and focused. Key actions should include timescales and owners.

Strengths

Areas for improvement

Key actions to improve performance

Reading analysis

Reports included in this section

Attainment & progress

Pupil groups

Disadvantaged pupils

Scatterplot

Confidential: Contains personal information



Key indicators

Scaled Score Reading

% Expected standard+ Reading

% Higher standard Reading



Value added

Achievement is compared with similar pupils nationally. The FFT VA model uses prior attainment, gender and month of birth as a starting point.

Mellers Primary School

2018

KS2

VA

Attainment & progress

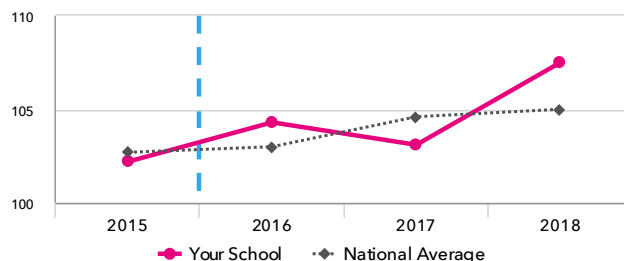
KS2 Attainment 2018

31 pupils

Scaled Score Reading

107.5 pts ↑

FFT Rank

100
1 BETTER ▶In line with the national average
(105.0)

KS2 Progress 2018

28 matched pupils

Scaled Score Reading

+5.2 pts +

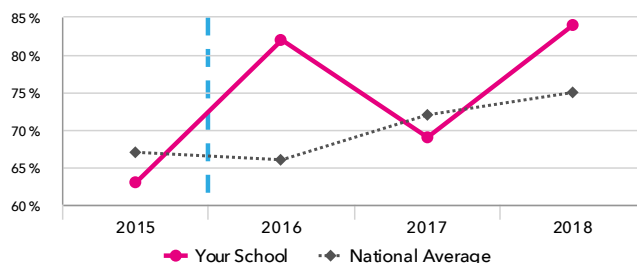
FFT Rank

100
1 BETTER ▶Significantly above the national
average (0)

% Expected standard+ Reading

84%

FFT Rank

100
1 BETTER ▶In line with the national average
(75%)

% Expected standard+ Reading

+22% +

FFT Rank

100
1 BETTER ▶Significantly above the national
average (0%)

KS2 performance summary

	Actual results			Pupil progress		
	2016	2017	2018	2016	2017	2018
Number of Pupils / % Matched	28	29	31	96%	93%	90%
% Expected standard+ (Re, Wr, Ma)	61%	66%	65%	+29% ↑	+16%	+16%
% Higher standard (Re, Wr, Ma)	0%	0%	0%	-2%	-2%	-3%
Average Scaled Score (Re, GPS, Ma)	103.4	105.2	105.7	+3.4 ↑	+2.8 +	+3.7 +
Average Scaled Score (Re, Ma)	103.2	104.6	105.9	+4.1 ↑	+2.6 +	+4.0 +
% Expected standard+ Reading	82%	69%	84%	+33% ↑	+7%	+22% +
% Higher standard Reading	14%	10%	39%	+3%	-1%	+24% +
Scaled Score Reading	104.3	103.1	107.5 ↑	+5.3 ↑	+2.1 ↓	+5.2 +
% Expected standard+ Writing	75%	76%	68%	+19% ↑	+8%	+0%
% Higher standard Writing	0% -	3%	6%	-6%	-3%	-1%
Scaled Score Writing	100.0	99.7	99.1	+3.1 +	+1.1	+0.9
% Expected standard+ Maths	79%	83%	74%	+29% ↑	+18%	+10%
% Higher standard Maths	4%	21%	13%	-5%	+2%	+3%
Scaled Score Maths	102.0	106.4 ↑	104.3	+2.6 ↑	+3.6 +	+2.8 +
% Expected standard+ Grammar, Punctuation & Spelling	75%	76%	74%	+20%	+8%	+9%
% Higher standard Grammar, Punctuation & Spelling	32%	21%	32%	+24% +	+6%	+16% +
Scaled Score Grammar, Punctuation & Spelling	105.2	105.4	106.5	+4.6 ↑	+2.1	+3.6 +
% Expected standard+ Science	79%	79%	74%	-	-	-
Average Point Score (Re, Wr, Ma)	-	-	-	-	-	-
% Level 4+ (Re, Wr, Ma)	-	-	-	-	-	-
% Level 4B+ (Re, Wr, Ma)	-	-	-	-	-	-
% Level 5+ (Re, Wr, Ma)	-	-	-	-	-	-

Mellers Primary School

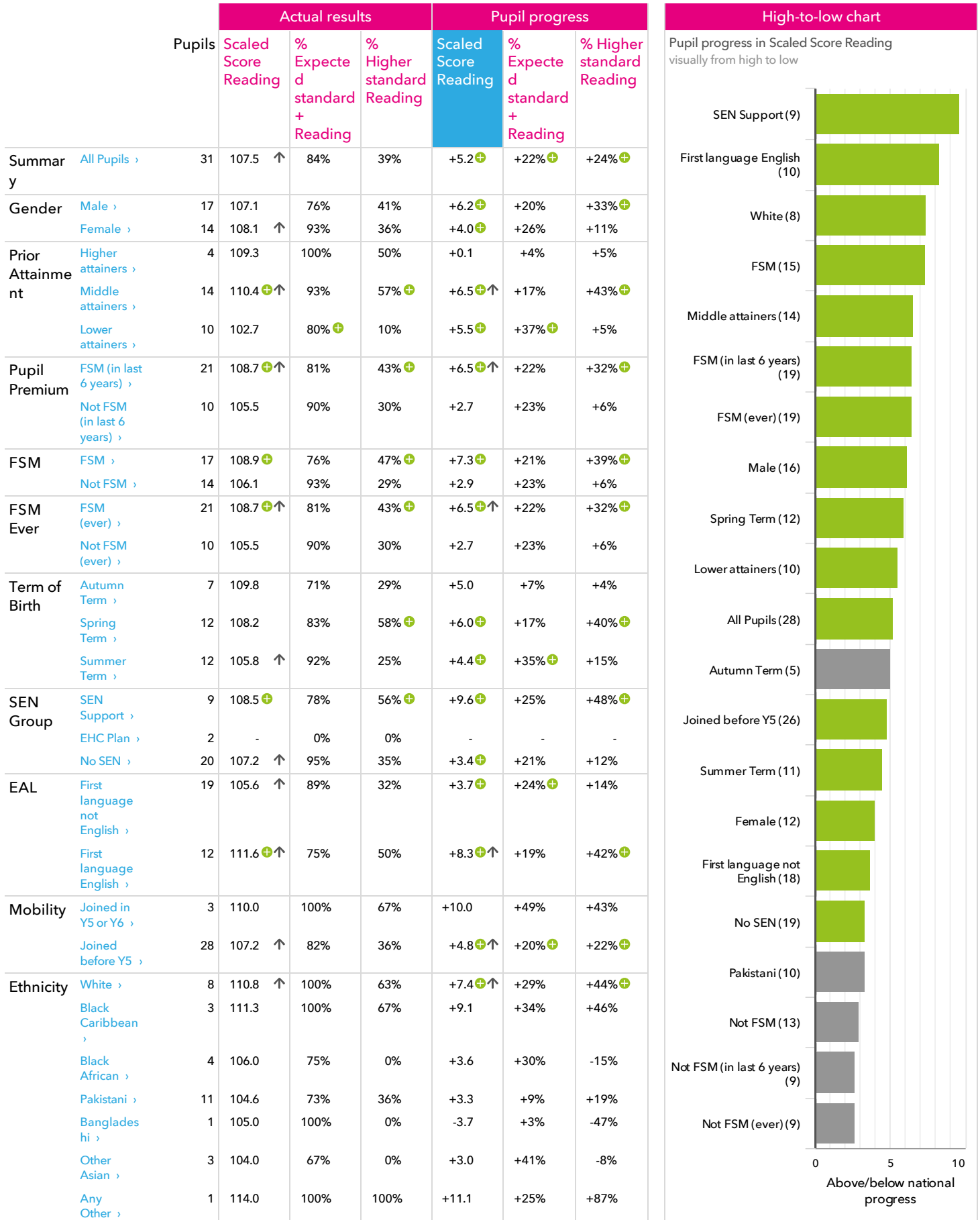
2018

KS2

VA

Pupil groups

KS2 Pupil groups performance 2018



Mellers Primary School

2018

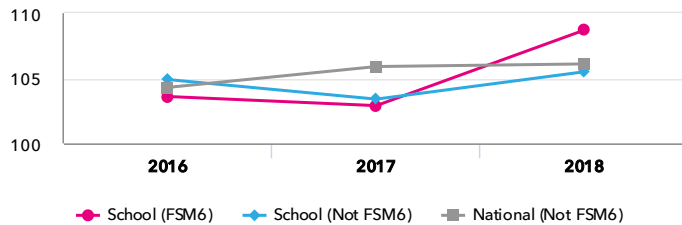
KS2

VA

Disadvantaged pupils

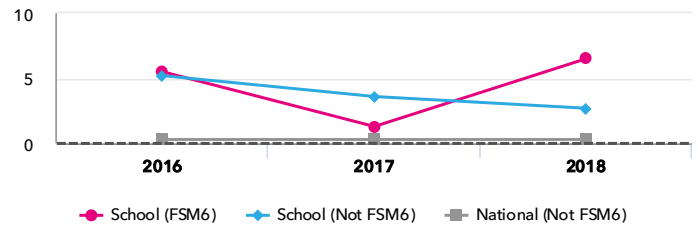
KS2 attainment for disadvantaged pupils 2018

Scaled Score Reading



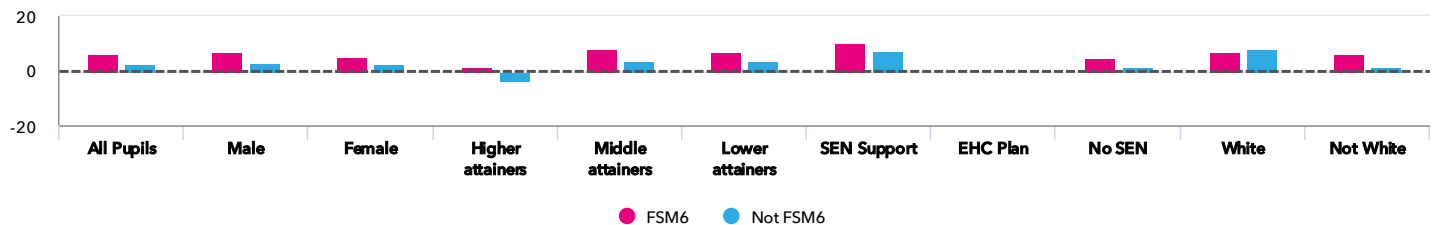
KS2 progress for disadvantaged pupils 2018

Scaled Score Reading



Progress gap

Scaled Score Reading

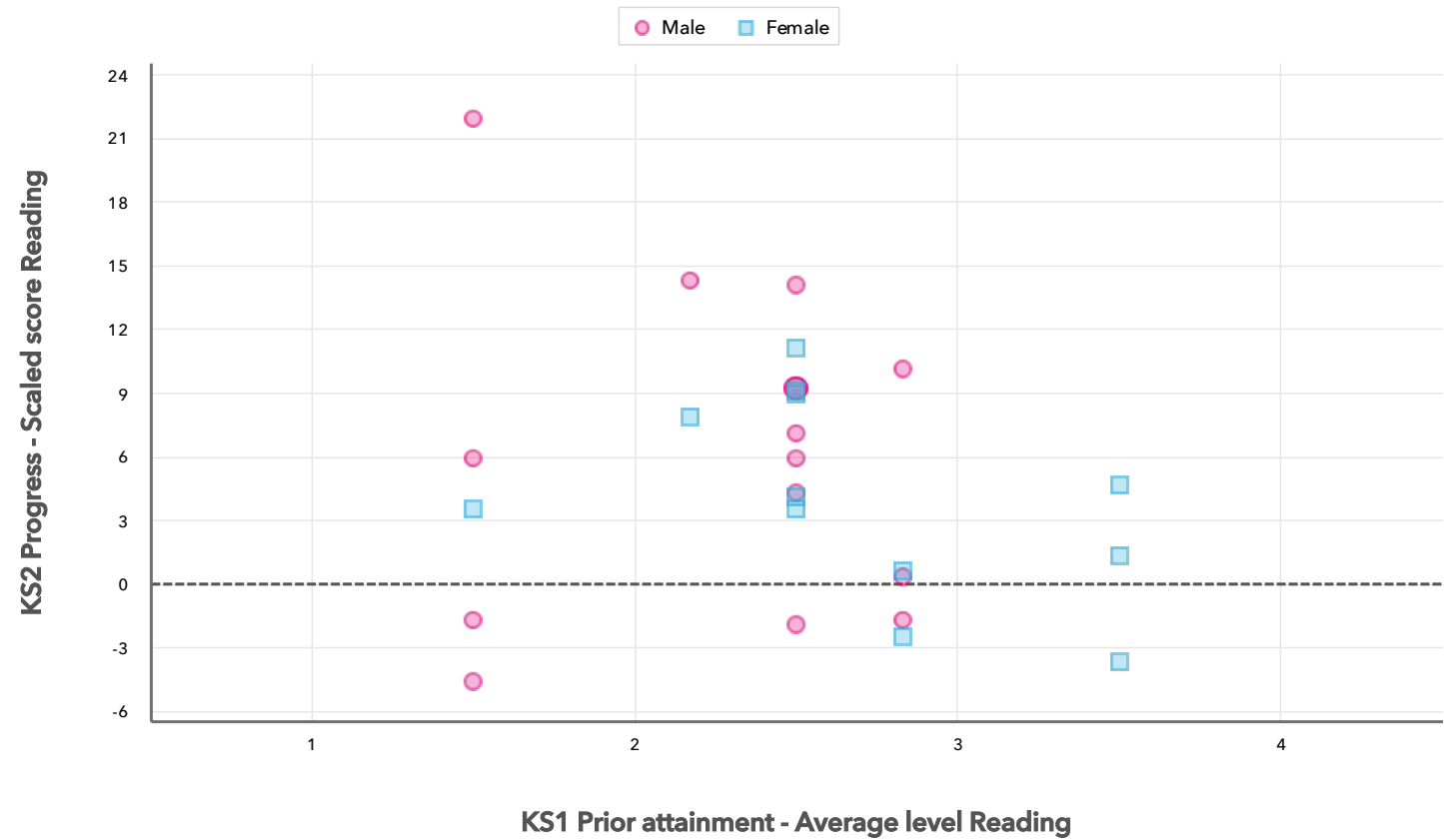


Attainment & progress

Pupils				Attainment			Progress		
				Scaled Score Reading			Scaled Score Reading		
		FSM6	Not FSM6	FSM6	Not FSM6	Gap	FSM6	Not FSM6	Gap
Summary	All Pupils	21	10	108.7 🟢⬆️	105.5	3.2	6.5 🟢⬆️	2.7	3.8
Gender	Male	14	3	108.5	101.3	7.2	7	2.8	4.2
	Female	7	7	109	107.3	1.7	5.4	2.6	2.8
Prior Attainment	Higher attainers	3	1	110.7	105	5.7	1.4	-3.7	5.1
	Middle attainers	10	4	111.1	108.8	2.3	7.8	3.6	4.2
	Lower attainers	6	4	104	100.8	3.2	7	3.4	3.6
SEN Group	SEN Support	7	2	109.2	106.5	2.7	10.3	7.5	2.8
	EHC Plan	2	-	-	-	-	-	-	-
	No SEN	12	8	108.4	105.3	3.1	4.5	1.3	3.2
Ethnic Group	White	5	3	113	107	6	7.1	7.9	-0.8
	Not White	16	7	107	104.9	2.1	6.2	0.1	6.1

Scatterplot

KS2 Pupil scatterplot 2018 31 pupils highlighted by Gender



Your evaluation – Reading analysis

2018

Key Stage 2

Use this page to assess your performance, evaluate your interventions and summarise key actions for next year. Keep your evaluation clear and focused. Key actions should include timescales and owners.

Strengths

Areas for improvement

Key actions to improve performance

Maths analysis

Reports included in this section

Attainment & progress

Pupil groups

Disadvantaged pupils

Scatterplot

Confidential: Contains personal information



Key indicators

Scaled Score Maths

% Expected standard+ Maths

% Higher standard Maths



Value added

Achievement is compared with similar pupils nationally. The FFT VA model uses prior attainment, gender and month of birth as a starting point.

Mellers Primary School

2018

KS2

VA

Attainment & progress

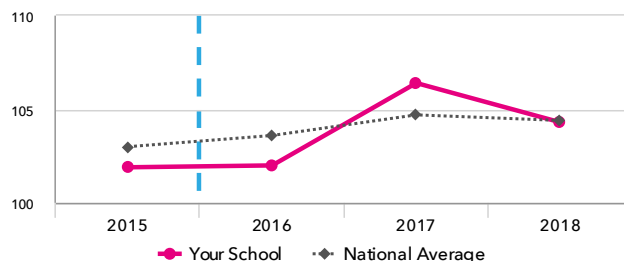
KS2 Attainment 2018

31 pupils

Scaled Score Maths

104.3 pts

FFT Rank

In line with the national average
(104.4)

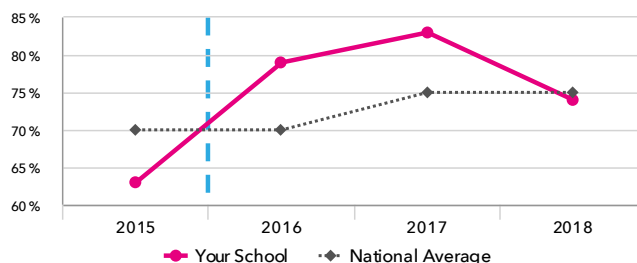
KS2 Progress 2018

28 matched pupils

Scaled Score Maths

+2.8 pts +

FFT Rank

Significantly above the national
average (0)

% Expected standard+ Maths

74%

FFT Rank

In line with the national average
(75%)

% Expected standard+ Maths

+10%

FFT Rank



In line with the national average (0%)

KS2 performance summary

	Actual results			Pupil progress		
	2016	2017	2018	2016	2017	2018
Number of Pupils / % Matched	28	29	31	96%	93%	90%
% Expected standard+ (Re, Wr, Ma)	61%	66%	65%	+29% +↑	+16%	+16%
% Higher standard (Re, Wr, Ma)	0%	0%	0%	-2%	-2%	-3%
Average Scaled Score (Re, GPS, Ma)	103.4	105.2	105.7	+3.4 +↑	+2.8 +	+3.7 +
Average Scaled Score (Re, Ma)	103.2	104.6	105.9	+4.1 +↑	+2.6 +	+4.0 +
% Expected standard+ Reading	82%	69%	84%	+33% +↑	+7%	+22% +
% Higher standard Reading	14%	10%	39%	+3%	-1%	+24% +
Scaled Score Reading	104.3	103.1	107.5 ↑	+5.3 +↑	+2.1 ↓	+5.2 +
% Expected standard+ Writing	75%	76%	68%	+19% ↑	+8%	+0%
% Higher standard Writing	0% -	3%	6%	-6%	-3%	-1%
Scaled Score Writing	100.0	99.7	99.1	+3.1 +	+1.1	+0.9
% Expected standard+ Maths	79%	83%	74%	+29% +↑	+18%	+10%
% Higher standard Maths	4%	21%	13%	-5%	+2%	+3%
Scaled Score Maths	102.0	106.4 ↑	104.3	+2.6 +↑	+3.6 +	+2.8 +
% Expected standard+ Grammar, Punctuation & Spelling	75%	76%	74%	+20%	+8%	+9%
% Higher standard Grammar, Punctuation & Spelling	32%	21%	32%	+24% +	+6%	+16% +
Scaled Score Grammar, Punctuation & Spelling	105.2	105.4	106.5	+4.6 +↑	+2.1	+3.6 +
% Expected standard+ Science	79%	79%	74%	-	-	-
Average Point Score (Re, Wr, Ma)	-	-	-	-	-	-
% Level 4+ (Re, Wr, Ma)	-	-	-	-	-	-
% Level 4B+ (Re, Wr, Ma)	-	-	-	-	-	-
% Level 5+ (Re, Wr, Ma)	-	-	-	-	-	-

Mellers Primary School

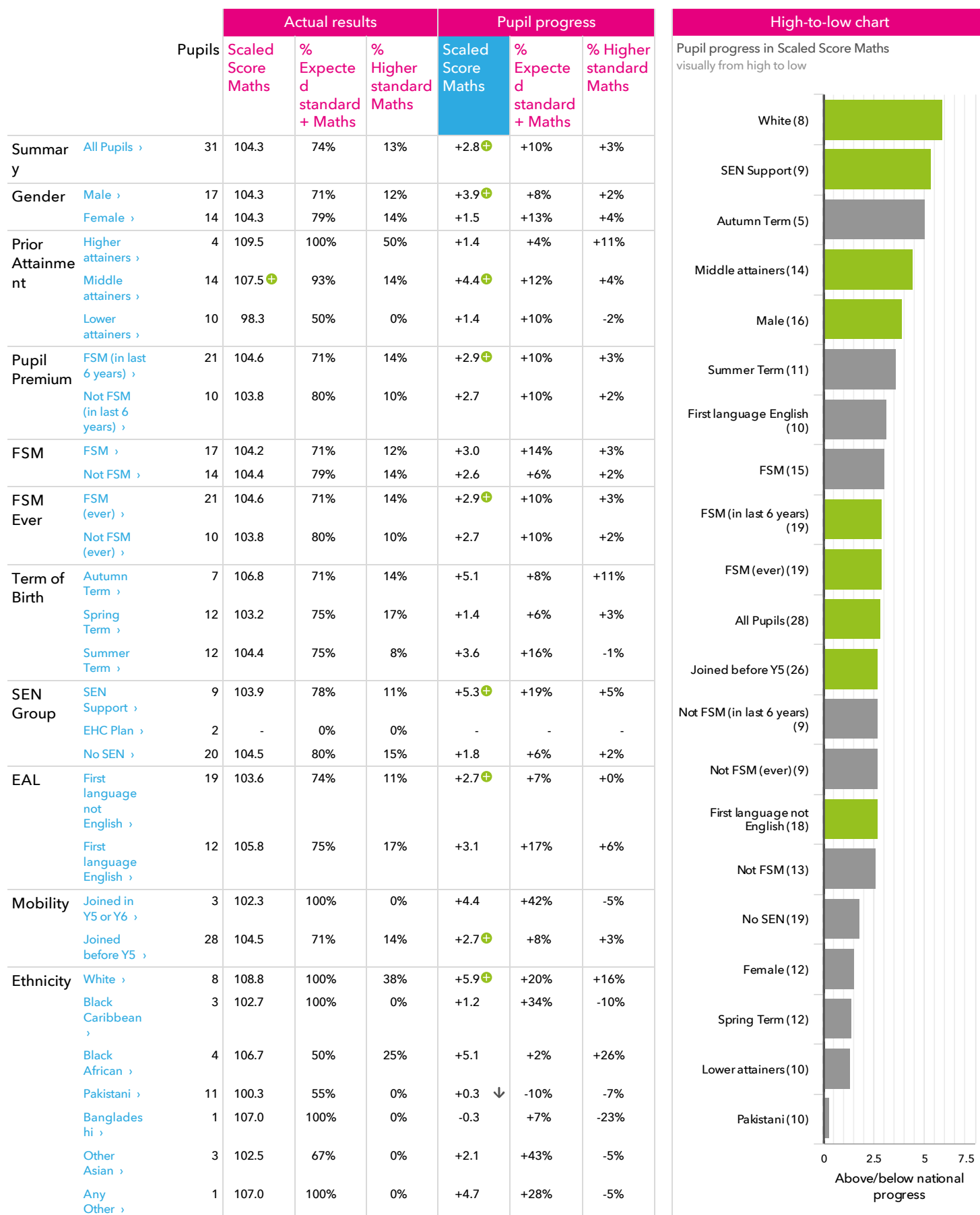
2018

KS2

VA

Pupil groups

KS2 Pupil groups performance 2018



Mellers Primary School

2018

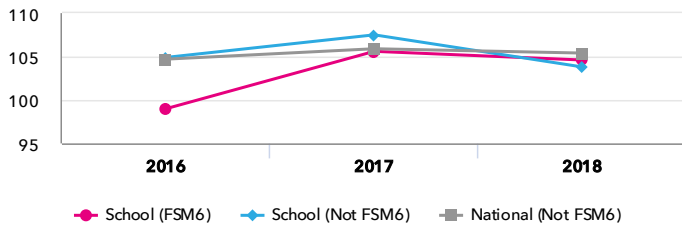
KS2

VA

Disadvantaged pupils

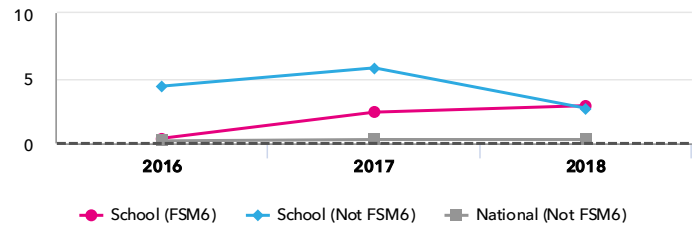
KS2 attainment for disadvantaged pupils 2018

Scaled Score Maths



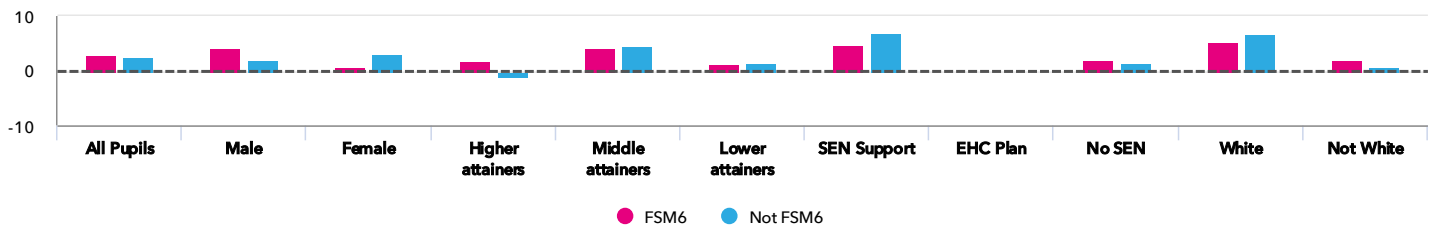
KS2 progress for disadvantaged pupils 2018

Scaled Score Maths



Progress gap

Scaled Score Maths

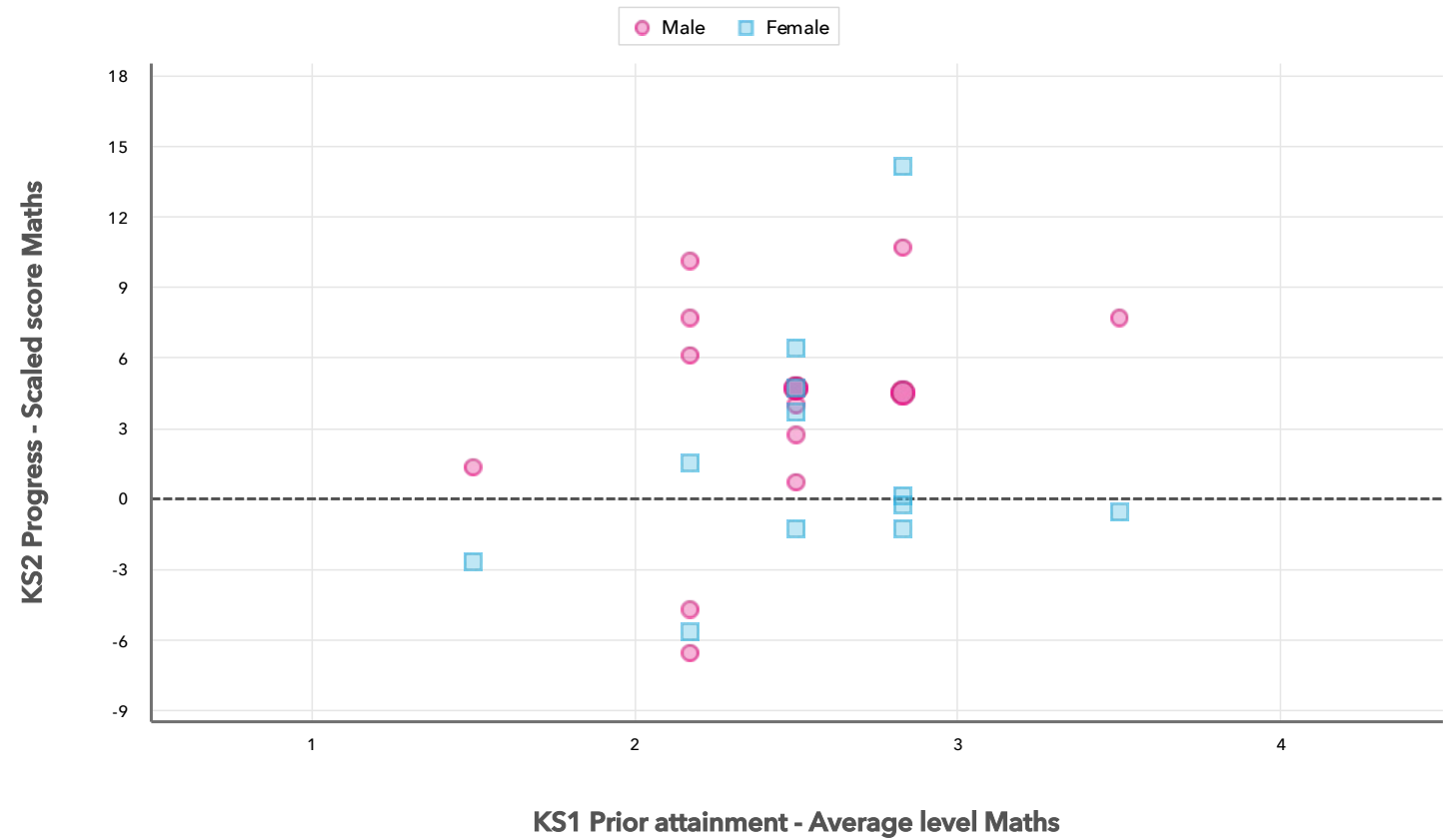


Attainment & progress

Pupils				Attainment			Progress		
				Scaled Score Maths			Scaled Score Maths		
		FSM6	Not FSM6	FSM6	Not FSM6	Gap	FSM6	Not FSM6	Gap
Summary	All Pupils	21	10	104.6	103.8	0.8	2.9 ⬆️	2.7	0.2
Gender	Male	14	3	105.3	100.3	5	4.3	2.1	2.2
	Female	7	7	103.2	105.3	-2.1	+0.0	3.1	-3.1
Prior Attainment	Higher attainers	3	1	110.3	107	3.3	1.9	-0.3	2.2
	Middle attainers	10	4	107	108.8	-1.8	4.3	4.6	-0.3
	Lower attainers	6	4	98	98.8	-0.8	1.2	1.6	-0.4
SEN Group	SEN Support	7	2	103.3	105.5	-2.2	4.8	6.9	-2.1
	EHC Plan	2	-	-	-	-	-	-	-
	No SEN	12	8	105.2	103.4	1.8	2	1.5	0.5
Ethnic Group	White	5	3	110.8	105.3	5.5	5.3	6.8	-1.5
	Not White	16	7	102.2	103.1	-0.9	2	0.7	1.3

Scatterplot

KS2 Pupil scatterplot 2018 31 pupils highlighted by Gender



Your evaluation – Maths analysis

2018

Key Stage 2

Use this page to assess your performance, evaluate your interventions and summarise key actions for next year. Keep your evaluation clear and focused. Key actions should include timescales and owners.

Strengths

Areas for improvement

Key actions to improve performance

Writing analysis

Reports included in this section

Attainment & progress

Pupil groups

Disadvantaged pupils

Scatterplot

Confidential: Contains personal information



Key indicators

Scaled Score Writing

% Expected standard+ Writing

% Higher standard Writing



Value added

Achievement is compared with similar pupils nationally. The FFT VA model uses prior attainment, gender and month of birth as a starting point.

Mellers Primary School

2018

KS2

VA

Attainment & progress

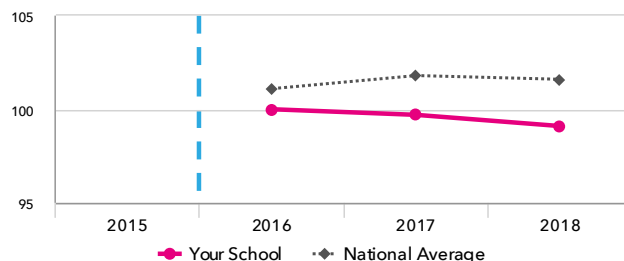
KS2 Attainment 2018

31 pupils

Scaled Score Writing

99.1

FFT Rank

In line with the national average
(101.6)

KS2 Progress 2018

28 matched pupils

Scaled Score Writing

+0.9

FFT Rank

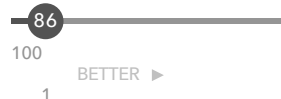
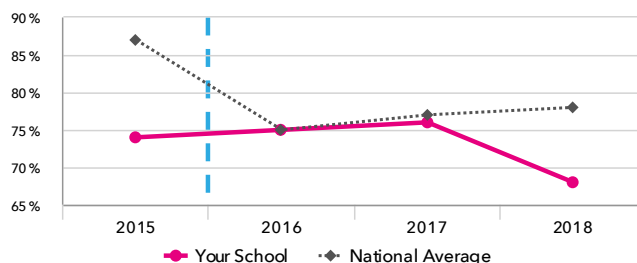


In line with the national average (0)

% Expected standard+ Writing

68%

FFT Rank

In line with the national average
(78%)

% Expected standard+ Writing

+0%

FFT Rank



In line with the national average (0%)

KS2 performance summary

	Actual results			Pupil progress		
	2016	2017	2018	2016	2017	2018
Number of Pupils / % Matched	28	29	31	96%	93%	90%
% Expected standard+ (Re, Wr, Ma)	61%	66%	65%	+29% + ↑	+16%	+16%
% Higher standard (Re, Wr, Ma)	0%	0%	0%	-2%	-2%	-3%
Average Scaled Score (Re, GPS, Ma)	103.4	105.2	105.7	+3.4 + ↑	+2.8 +	+3.7 +
Average Scaled Score (Re, Ma)	103.2	104.6	105.9	+4.1 + ↑	+2.6 +	+4.0 +
% Expected standard+ Reading	82%	69%	84%	+33% + ↑	+7%	+22% +
% Higher standard Reading	14%	10%	39%	+3%	-1%	+24% +
Scaled Score Reading	104.3	103.1	107.5 ↑	+5.3 + ↑	+2.1 ↓	+5.2 +
% Expected standard+ Writing	75%	76%	68%	+19% ↑	+8%	+0%
% Higher standard Writing	0% ⊖	3%	6%	-6%	-3%	-1%
Scaled Score Writing	100.0	99.7	99.1	+3.1 +	+1.1	+0.9
% Expected standard+ Maths	79%	83%	74%	+29% + ↑	+18%	+10%
% Higher standard Maths	4%	21%	13%	-5%	+2%	+3%
Scaled Score Maths	102.0	106.4 ↑	104.3	+2.6 + ↑	+3.6 +	+2.8 +
% Expected standard+ Grammar, Punctuation & Spelling	75%	76%	74%	+20%	+8%	+9%
% Higher standard Grammar, Punctuation & Spelling	32%	21%	32%	+24% +	+6%	+16% +
Scaled Score Grammar, Punctuation & Spelling	105.2	105.4	106.5	+4.6 + ↑	+2.1	+3.6 +
% Expected standard+ Science	79%	79%	74%	-	-	-
Average Point Score (Re, Wr, Ma)	-	-	-	-	-	-
% Level 4+ (Re, Wr, Ma)	-	-	-	-	-	-
% Level 4B+ (Re, Wr, Ma)	-	-	-	-	-	-
% Level 5+ (Re, Wr, Ma)	-	-	-	-	-	-

Mellers Primary School

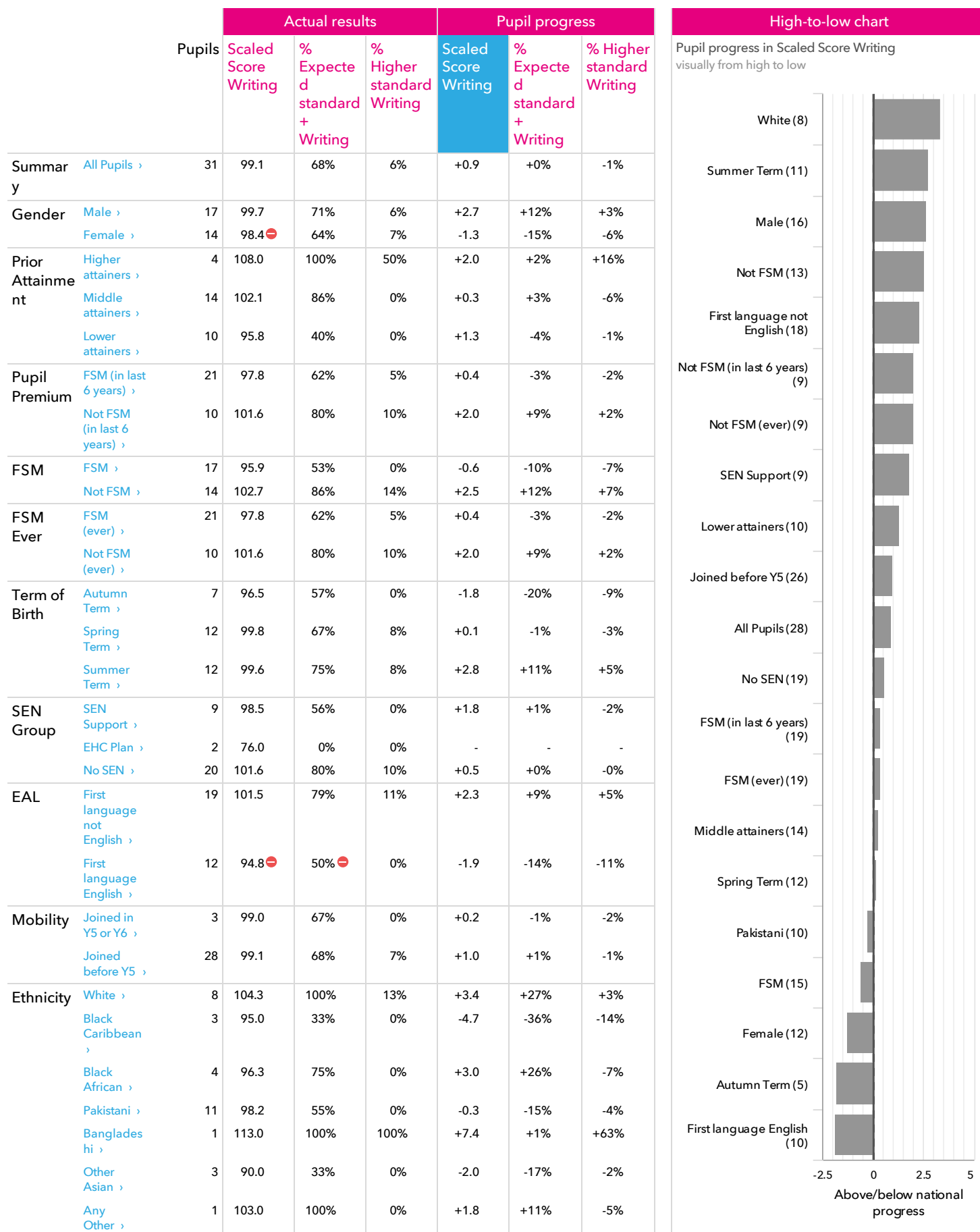
2018

KS2

VA

Pupil groups

KS2 Pupil groups performance 2018



Mellers Primary School

2018

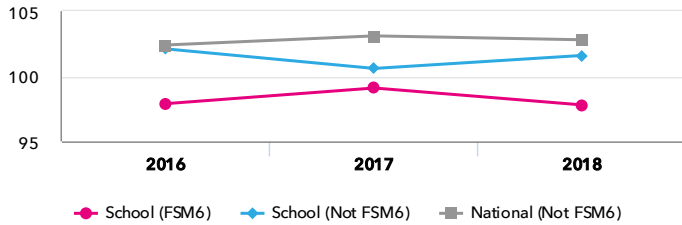
KS2

VA

Disadvantaged pupils

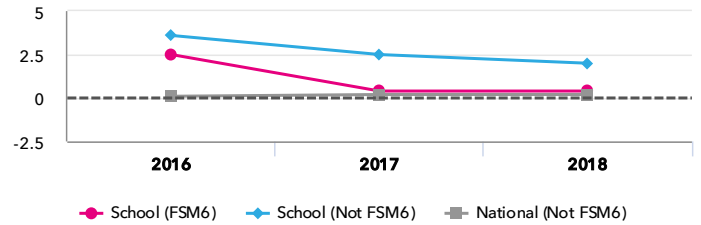
KS2 attainment for disadvantaged pupils 2018

Scaled Score Writing



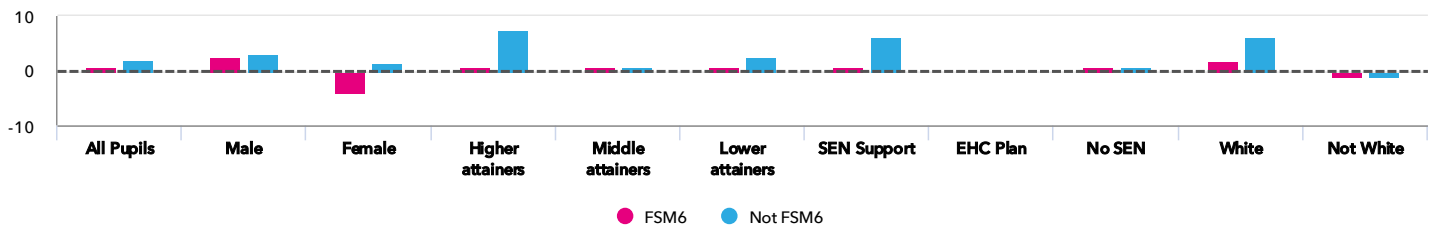
KS2 progress for disadvantaged pupils 2018

Scaled Score Writing



Progress gap

Scaled Score Writing

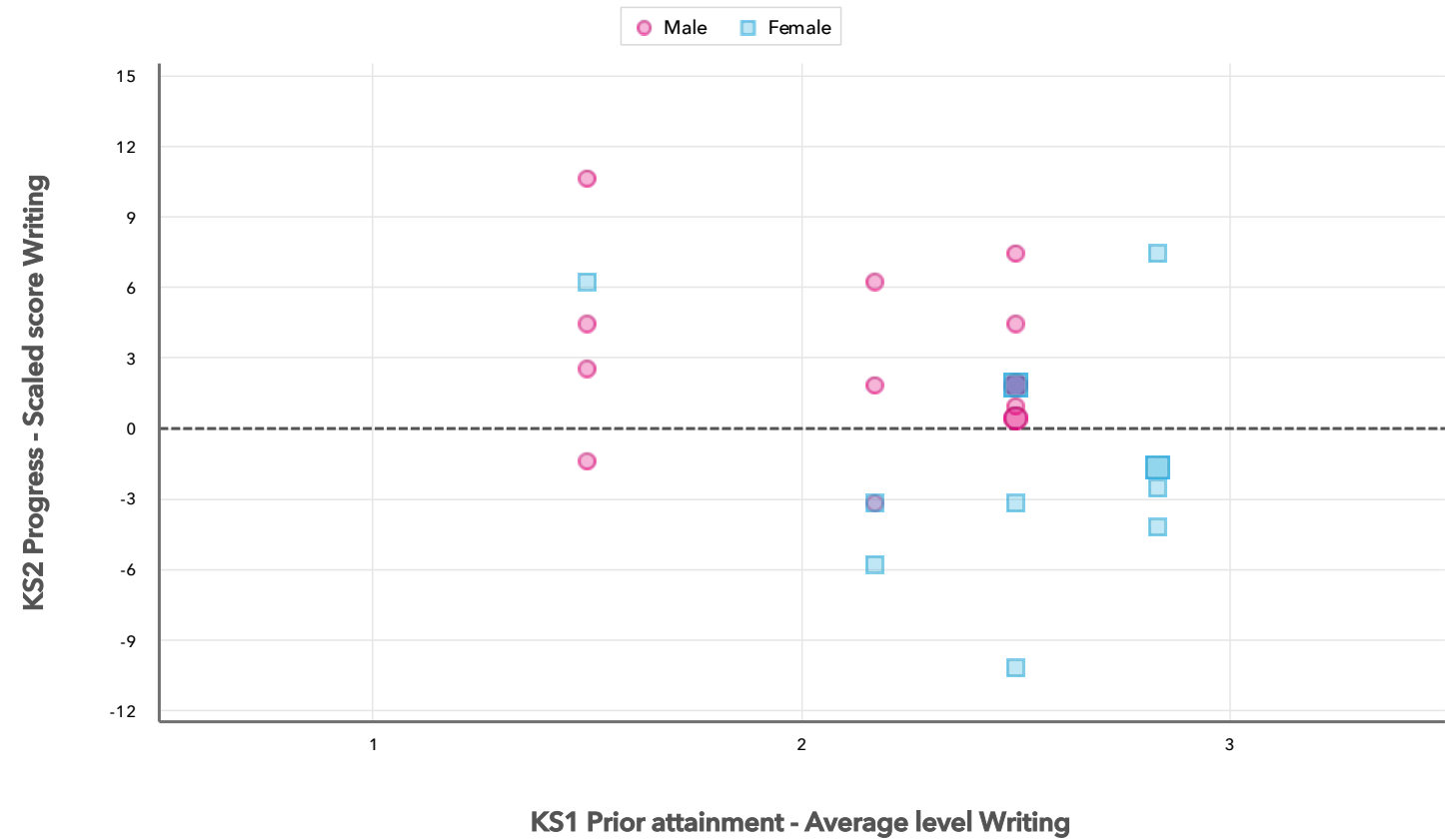


Attainment & progress

Pupils				Attainment			Progress		
				Scaled Score Writing			Scaled Score Writing		
		FSM6	Not FSM6	FSM6	Not FSM6	Gap	FSM6	Not FSM6	Gap
Summary	All Pupils	21	10	97.8	101.6	-3.8	0.4	2	-1.6
Gender	Male	14	3	99.8	99	0.8	2.5	3.1	-0.6
	Female	7	7	94	102.7	-8.7	-4	1.5	-5.5
Prior Attainment	Higher attainers	3	1	106.3	113	-6.7	0.2	7.4	-7.2
	Middle attainers	10	4	101.7	103	-1.3	0.3	0.1	0.2
	Lower attainers	6	4	95	97	-2	0.5	2.6	-2.1
SEN Group	SEN Support	7	2	97	103	-6	0.3	6.2	-5.9
	EHC Plan	2	-	76	-	-	-	-	-
	No SEN	12	8	101.8	101.3	0.5	0.4	0.8	-0.4
Ethnic Group	White	5	3	105	103	2	1.7	6.2	-4.5
	Not White	16	7	95.4	101	-5.6	-0.1	-0.1	0

Scatterplot

KS2 Pupil scatterplot 2018 31 pupils highlighted by Gender



Your evaluation – Writing analysis

2018

Key Stage 2

Use this page to assess your performance, evaluate your interventions and summarise key actions for next year. Keep your evaluation clear and focused. Key actions should include timescales and owners.

Strengths

Areas for improvement

Key actions to improve performance

Grammar, punctuation & spelling analysis

Reports included in this section

Attainment & progress
Pupil groups
Disadvantaged pupils
Scatterplot
Confidential: Contains personal information



Key indicators

- Scaled Score Grammar, Punctuation & Spelling
- % Expected standard+ Grammar, Punctuation & Spelling
- % Higher standard Grammar, Punctuation & Spelling



Value added

Achievement is compared with similar pupils nationally. The FFT VA model uses prior attainment, gender and month of birth as a starting point.

Mellers Primary School

2018 KS2 VA

Attainment & progress

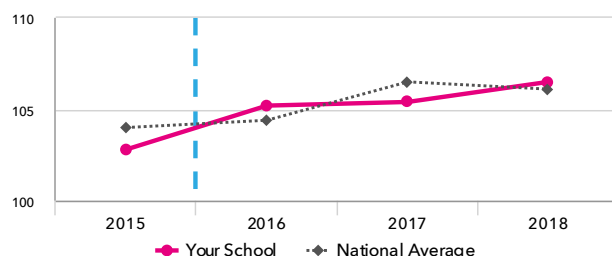
KS2 Attainment 2018

31 pupils

Scaled Score Grammar,
Punctuation & Spelling

106.5

FFT Rank



KS2 Progress 2018

28 matched pupils

Scaled Score Grammar, Punctuation
& Spelling

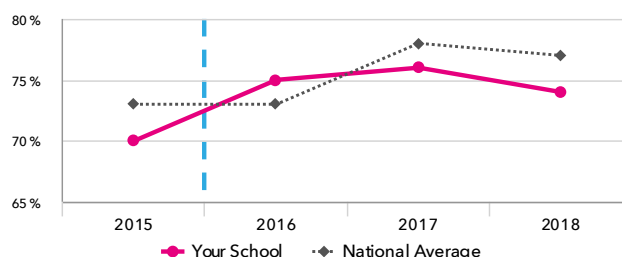
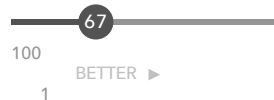
+3.6+

FFT Rank

% Expected standard+ Grammar,
Punctuation & Spelling

74%

FFT Rank

% Expected standard+ Grammar,
Punctuation & Spelling

+9%

FFT Rank



KS2 performance summary

	Actual results			Pupil progress		
	2016	2017	2018	2016	2017	2018
Number of Pupils / % Matched	28	29	31	96%	93%	90%
% Expected standard+ (Re, Wr, Ma)	61%	66%	65%	+29% ⁺ ↑	+16%	+16%
% Higher standard (Re, Wr, Ma)	0%	0%	0%	-2%	-2%	-3%
Average Scaled Score (Re, GPS, Ma)	103.4	105.2	105.7	+3.4 ⁺ ↑	+2.8 ⁺	+3.7 ⁺
Average Scaled Score (Re, Ma)	103.2	104.6	105.9	+4.1 ⁺ ↑	+2.6 ⁺	+4.0 ⁺
% Expected standard+ Reading	82%	69%	84%	+33% ⁺ ↑	+7%	+22% ⁺
% Higher standard Reading	14%	10%	39%	+3%	-1%	+24% ⁺
Scaled Score Reading	104.3	103.1	107.5 ↑	+5.3 ⁺ ↑	+2.1 ↓	+5.2 ⁺
% Expected standard+ Writing	75%	76%	68%	+19% ↑	+8%	+0%
% Higher standard Writing	0% ⁻	3%	6%	-6%	-3%	-1%
Scaled Score Writing	100.0	99.7	99.1	+3.1 ⁺	+1.1	+0.9
% Expected standard+ Maths	79%	83%	74%	+29% ⁺ ↑	+18%	+10%
% Higher standard Maths	4%	21%	13%	-5%	+2%	+3%
Scaled Score Maths	102.0	106.4 ↑	104.3	+2.6 ⁺ ↑	+3.6 ⁺	+2.8 ⁺
% Expected standard+ Grammar, Punctuation & Spelling	75%	76%	74%	+20%	+8%	+9%
% Higher standard Grammar, Punctuation & Spelling	32%	21%	32%	+24% ⁺	+6%	+16% ⁺
Scaled Score Grammar, Punctuation & Spelling	105.2	105.4	106.5	+4.6 ⁺ ↑	+2.1	+3.6 ⁺
% Expected standard+ Science	79%	79%	74%	-	-	-
Average Point Score (Re, Wr, Ma)	-	-	-	-	-	-
% Level 4+ (Re, Wr, Ma)	-	-	-	-	-	-
% Level 4B+ (Re, Wr, Ma)	-	-	-	-	-	-
% Level 5+ (Re, Wr, Ma)	-	-	-	-	-	-

Mellers Primary School

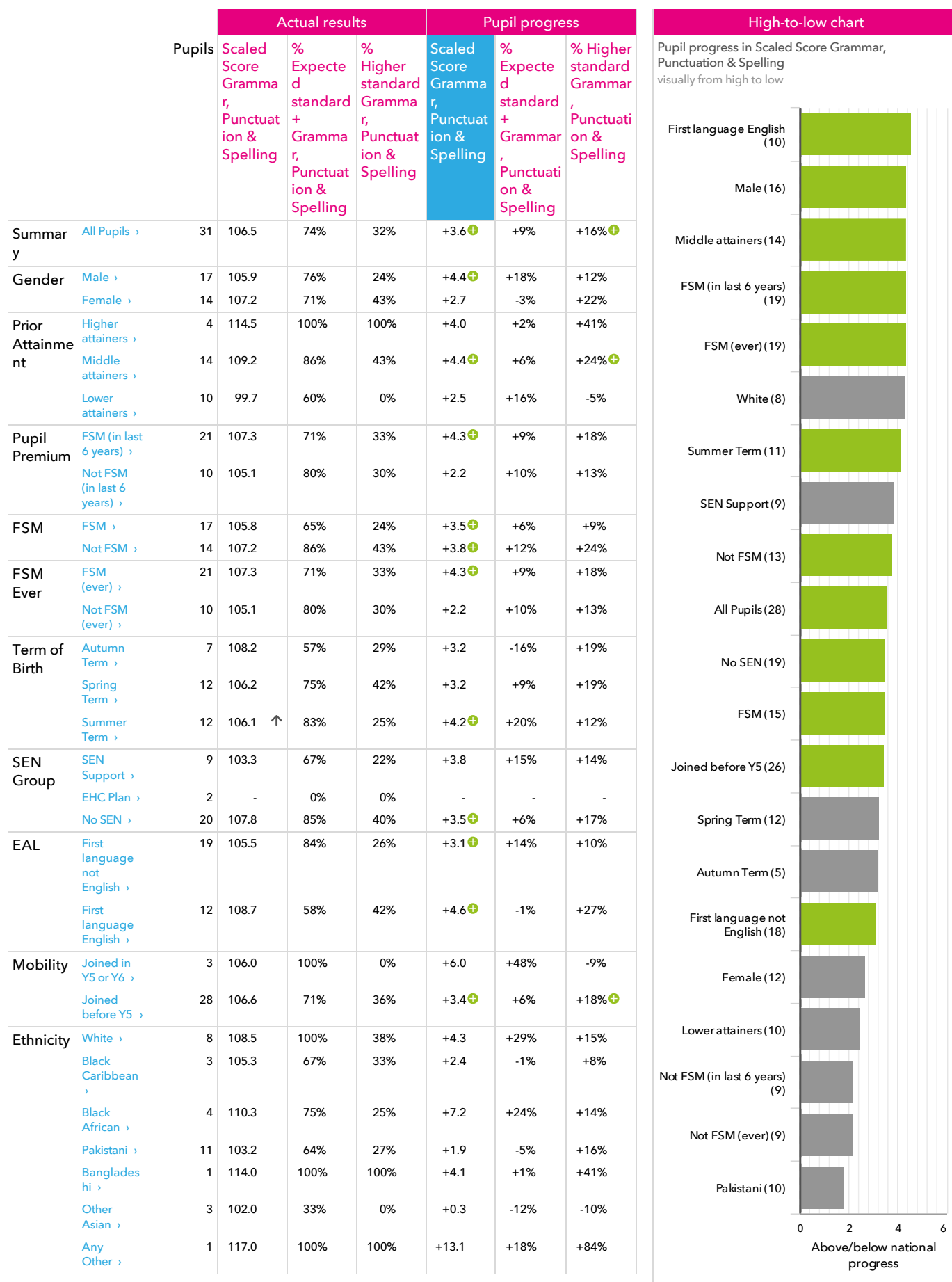
2018

KS2

VA

Pupil groups

KS2 Pupil groups performance 2018



Mellers Primary School

2018

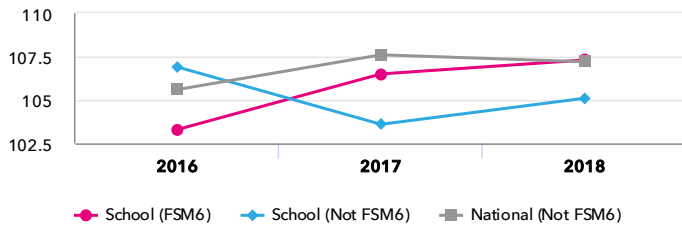
KS2

VA

Disadvantaged pupils

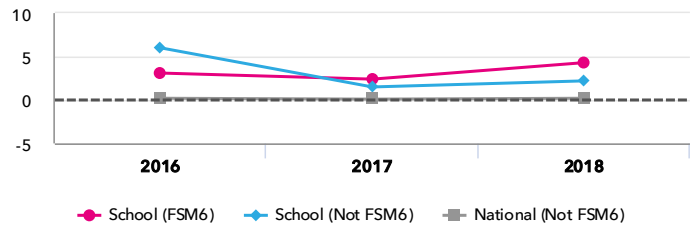
KS2 attainment for disadvantaged pupils 2018

Scaled Score Grammar, Punctuation & Spelling



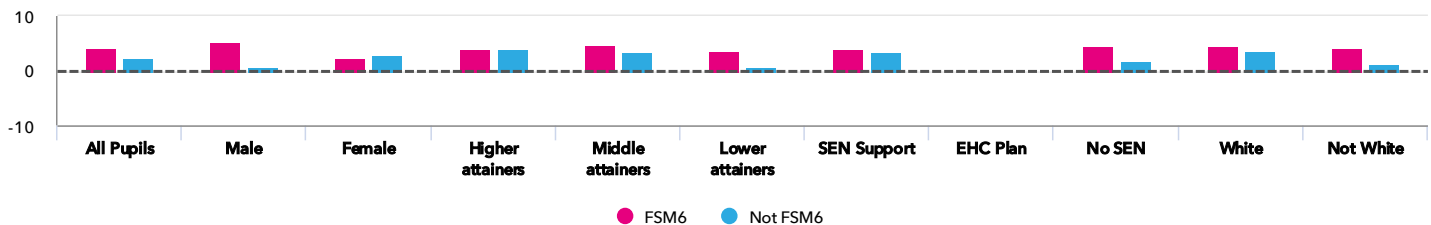
KS2 progress for disadvantaged pupils 2018

Scaled Score Grammar, Punctuation & Spelling



Progress gap

Scaled Score Grammar, Punctuation & Spelling



Attainment & progress

Pupils				Attainment			Progress		
				Scaled Score Grammar, Punctuation & Spelling			Scaled Score Grammar, Punctuation & Spelling		
		FSM6	Not FSM6	FSM6	Not FSM6	Gap	FSM6	Not FSM6	Gap
Summary	All Pupils	21	10	107.3	105.1	2.2	4.3	2.2	2.1
Gender	Male	14	3	107.5	99.3	8.2	5.3	0.6	4.7
	Female	7	7	106.8	107.6	-0.8	2.4	3.0	-0.6
Prior Attainment	Higher attainers	3	1	114.7	114.0	0.7	4.0	4.1	-0.1
	Middle attainers	10	4	109.0	109.8	-0.8	4.8	3.3	1.5
	Lower attainers	6	4	101.0	97.8	3.2	3.8	0.5	3.3
SEN Group	SEN Support	7	2	103.3	103.0	0.3	4.0	3.5	0.5
	EHC Plan	2	-	-	-	-	-	-	-
	No SEN	12	8	109.3	105.6	3.7	4.5	1.8	2.7
Ethnic Group	White	5	3	111.6	103.3	8.3	4.6	3.8	0.8
	Not White	16	7	105.6	105.9	-0.3	4.2	1.3	2.9

Scatterplot

KS2 Pupil scatterplot 2018 31 pupils highlighted by Gender



Your evaluation – Grammar, punctuation & spelling analysis

2018

Key Stage 2

Use this page to assess your performance, evaluate your interventions and summarise key actions for next year. Keep your evaluation clear and focused. Key actions should include timescales and owners.

Strengths

Areas for improvement

Key actions to improve performance