

Self-evaluation Summary Dashboard

Produce custom dashboards
at fftaspire.org

Mellers Primary School

LA Nottingham City DFE 8922158 Produced February 2021

Reports

- Overview
- Attainment & Progress
- Pupil groups
- Subjects
- Disadvantaged pupils
- Scatterplot
- Context

What it tells you

- What are the strengths and weaknesses of your school?
- How does attainment and pupil progress at your school compare to the national average?
- How are you performing in different subjects?
- Do you have any under-performing groups of pupils?

About the data shown



Filters

No filters chosen (all pupils included)

You can use filters to view a subset of pupils



Indicators

% Expected Standard + (Re, Wr, Ma)

% Higher Standard (Re, Wr, Ma)

2020 self-evaluation reports have been calculated using the teacher assessments provided by schools as part of the FFT Results Service. ?

Mellers Primary School

2020 KS1

Overview

KS1 Attainment 2020 · Actual results

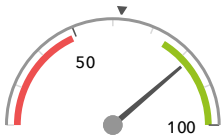
60 pupils

% Expected Standard + (Re, Wr, Ma)

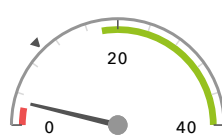
% Higher Standard (Re, Wr, Ma)

82% + ↑

3%



Significantly above the national average (62%) ◀



In line with the national average (10%) ◀

KS1 Progress 2020 · Value Added

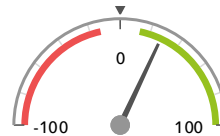
57 matched pupils

% Expected Standard + (Re, Wr, Ma)

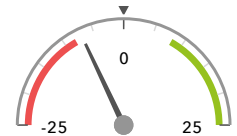
% Higher Standard (Re, Wr, Ma)

+28% + ↑

-7%



Significantly above the national average (0%) ◀



In line with the national average (0%) ◀

KS1 higher and lower performing pupil groups 2020

Minimum group size: 5

	Higher performing	Lower performing
Overall achievement pupil progress	Lower attainers (19) + Black African (14) Male (25)	Higher attainers (14) - Black Caribbean (8) Female (32)
KS1 reading achievement pupil progress	Lower attainers (19) Black African (14) Male (25)	Higher attainers (14) Black Caribbean (8) Female (32)
KS1 writing achievement pupil progress	Lower attainers (19) Any Other (6) Male (25)	Higher attainers (14) Black Caribbean (8) FSM (18)
KS1 mathematics achievement pupil progress	Lower attainers (19) Black African (14) Male (25)	Higher attainers (14) Black Caribbean (8) White (14)

2020 self-evaluation reports have been calculated using the teacher assessments provided by schools as part of the FFT Results Service. ?

Mellers Primary School

2020 KS1

Attainment & progress

KS1 Attainment 2020

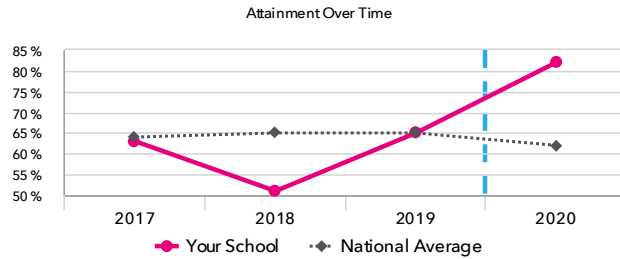
60 pupils

% Expected Standard + (Re, Wr, Ma)

82% + ↑



Significantly above the national average (62%)

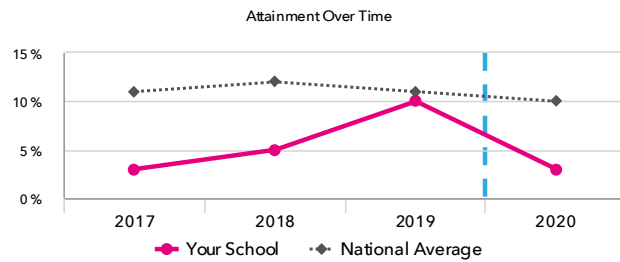


% Higher Standard (Re, Wr, Ma)

3%



In line with the national average (10%)



KS1 Progress 2020

57 matched pupils

% Expected Standard + (Re, Wr, Ma)

+28% + ↑



Significantly above the national average (0%)

% Higher Standard (Re, Wr, Ma)

-7%



In line with the national average (0%)

KS1 performance summary

	Actual results			Pupil progress		
	2018	2019	2020	2018	2019	2020
Number of Pupils / % Matched	43	60	60	81%	90%	95%
% Expected Standard + (Re, Wr, Ma)	51%	65%	82% + ↑	+5%	+8%	+28% + ↑
% Higher Standard (Re, Wr, Ma)	5%	10%	3%	+0%	-5%	-7%
% Expected Standard + Reading	63%	75%	82% +	+8%	+8%	+18% +
% Higher Standard Reading	5% -	25%	7% - ↓	-9%	-2%	-13% -
% Expected Standard + Writing	56%	68%	82% +	+5%	+7%	+23% + ↑
% Higher Standard Writing	5%	18%	3% -	-2%	+1%	-10% -
% Expected Standard + Maths	65%	77%	87% +	+8%	+8%	+21% +
% Higher Standard Maths	7% -	18%	10%	-4%	-8%	-7%

2020 self-evaluation reports have been calculated using the teacher assessments provided by schools as part of the FFT Results Service. ?

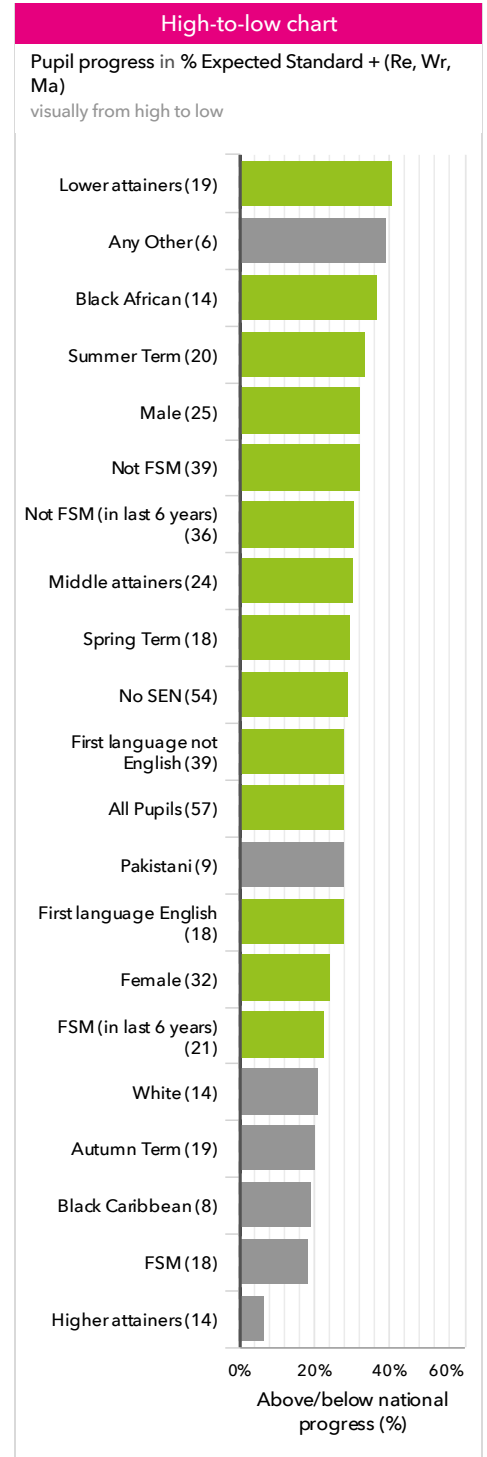
Mellers Primary School

2020 KS1

Pupil groups

KS1 Pupil groups performance 2020

	Pupils	Actual results		Pupil progress		
		% Expected Standard + (Re, Wr, Ma)	% Higher Standard (Re, Wr, Ma)	% Expected Standard + (Re, Wr, Ma)	% Higher Standard (Re, Wr, Ma)	
Summary	All Pupils	60	82% + ↑	3%	+28% + ↑	-7%
Gender	Male	28	64%	0%	+32% +	-3%
	Female	32	97% +	6%	+25% +	-11%
Prior Attainment	Higher attainers	14	100%	14%	+7%	-23%
	Middle attainers	24	100% +	0%	+30% +	-4%
	Lower attainers	19	58% +	0%	+41% +	-0%
Pupil Premium	FSM (in last 6 years)	21	76% +	0%	+23% +	-10%
	Not FSM (in last 6 years)	39	85% +	5%	+31% +	-6%
FSM	FSM	18	72% +	0%	+18%	-11%
	Not FSM	42	86% +	5%	+32% +	-5%
Term of Birth	Summer Term	21	86% + ↑	0%	+34% +	-6%
	Spring Term	20	75%	5%	+30% +	-7%
	Autumn Term	19	84%	5%	+20%	-8%
SEN Group	SEN Support	3	33%	0%	+7%	-1%
	No SEN	57	84% +	4%	+29% + ↑	-8%
EAL	First language not English	42	83% + ↑	5%	+28% +	-5%
	First language English	18	78%	0%	+28% +	-12%
Ethnicity	White	14	79%	0%	+21%	-10%
	Black Caribbean	8	63%	0%	+19%	-10%
	Black African	14	86%	0%	+37% +	-6%
	Indian	2	100%	0%	+23%	-30%
	Pakistani	9	100% +	22%	+28%	+4%
	Other Asian	2	100%	0%	+32%	-3%
	Chinese	2	100%	0%	+16%	-31%
	Any Other	9	67%	0%	+39%	-3%



2020 self-evaluation reports have been calculated using the teacher assessments provided by schools as part of the FFT Results Service. ?

Mellers Primary School

2020 KS1

Subjects

KS1 subject performance 2020

	Actual results			Pupil progress			Actual results over time		
	2018	2019	2020	2018	2019	2020			
Number of Pupils / % Matched	43	60	60	81%	90%	95%			
Reading									
% Expected Standard +	63%	75%	82%	+8%	+8%	+18% +			
% Higher Standard	5% -	25%	7% - ↓	-9%	-2%	-13% -			
Writing									
% Expected Standard +	56%	68%	82% +	+5%	+7%	+23% + ↑			
% Higher Standard	5%	18%	3% -	-2%	+1%	-10% -			
Maths									
% Expected Standard +	65%	77%	87% +	+8%	+8%	+21% +			
% Higher Standard	7% -	18%	10%	-4%	-8%	-7%			
Science									
% Expected Standard +	79%	80%	-	-	-	-			

2020 self-evaluation reports have been calculated using the teacher assessments provided by schools as part of the FFT Results Service. ?

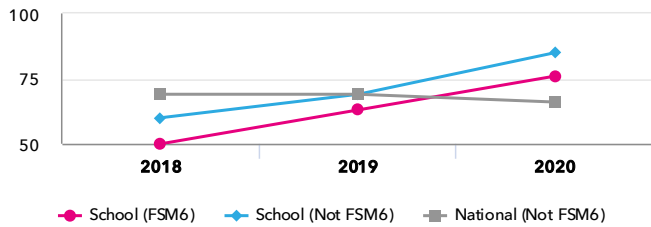
Mellers Primary School

2020 KS1

Disadvantaged pupils

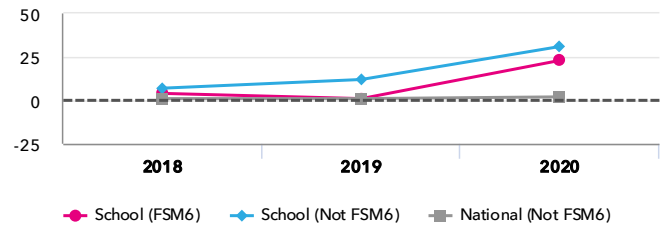
KS1 attainment for disadvantaged pupils 2020

% Expected Standard + (Re, Wr, Ma)

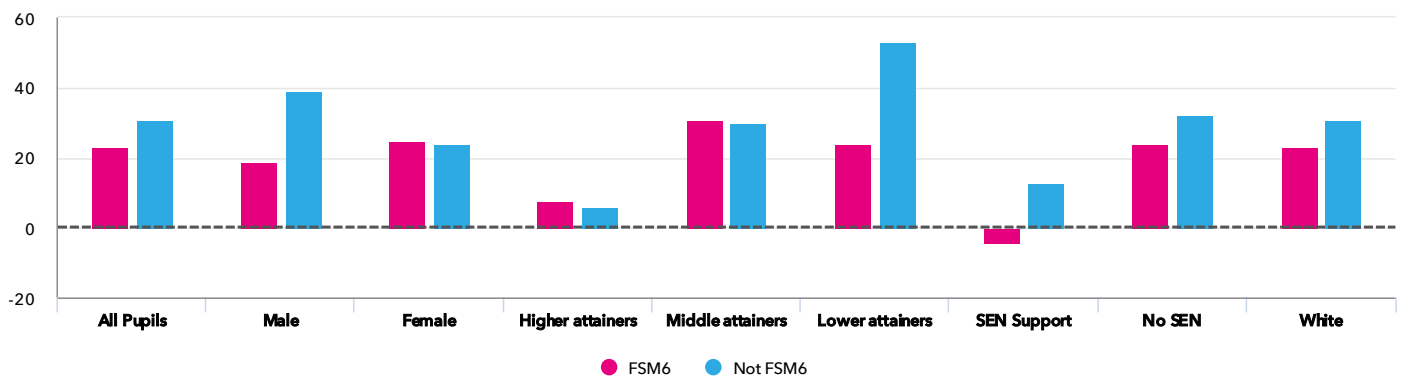


KS1 progress for disadvantaged pupils 2020

% Expected Standard + (Re, Wr, Ma)



Progress gap % Expected Standard + (Re, Wr, Ma)



Attainment & progress

Pupils	FSM6	Not FSM6	Attainment			Progress			
			% Expected Standard + (Re, Wr, Ma)			% Expected Standard + (Re, Wr, Ma)			
			FSM6	Not FSM6	Gap	FSM6	Not FSM6	Gap	
Summary	All Pupils	21	39	76% +	85% +	-9%	23% +	31% +	-8%
Gender	Male	8	20	50%	70%	-20%	19%	39%	-20%
	Female	13	19	92%	100%	-8%	25%	24%	1%
Prior Attainment	Higher attainers	5	9	100%	100%	0%	8%	6%	2%
	Middle attainers	8	16	100%	100%	0%	31%	30%	1%
	Lower attainers	8	11	38%	73%	-35%	24%	53%	-29%
SEN Group	SEN Support	1	2	0%	50%	-50%	-4%	13%	-17%
	No SEN	20	37	80%	86%	-6%	24%	32%	-8%
Ethnic Group	White	21	39	76%	85%	-9%	23%	31%	-8%

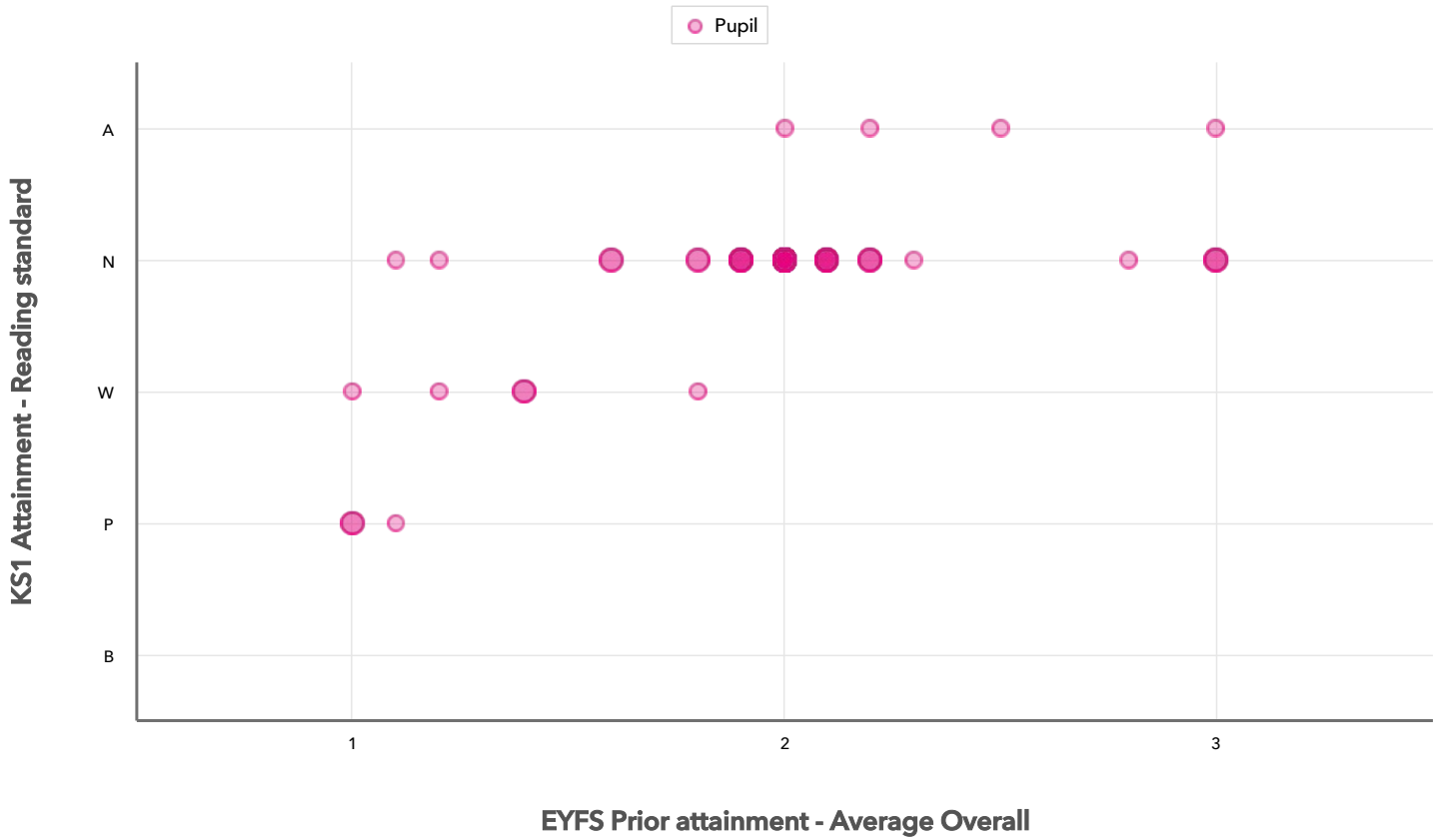
2020 self-evaluation reports have been calculated using the teacher assessments provided by schools as part of the FFT Results Service. ?

Mellers Primary School

2020 KS1

Scatterplot

KS1 Pupil scatterplot 2020 60 pupils highlighted by All pupils



Context data has been produced using either the data supplied by schools as part of the FFT 2020 Results Service or from the latest census data provided by the DfE. [?](#)

Mellers Primary School

2020

KS1

Context

Context · Year 2

		Pupils	Comparative profile 2019 / 2020		Absence during Key Stage 1		Persistent absence during Key Stage 1	
		School	School	National	School	National	School	National
Summary	All Pupils	60	100%	100%	-	-	-	-
Gender	Male	28	47%	51%	-	-	-	-
	Female	32	53%	49%	-	-	-	-
Prior Attainment	Higher attainers	14	23%	34%	-	-	-	-
	Middle attainers	24	40%	35%	-	-	-	-
	Lower attainers	19	32%	27%	-	-	-	-
Pupil Premium	FSM (in last 6 years)	21	35%	26%	-	-	-	-
	Not FSM (in last 6 years)	39	65%	74%	-	-	-	-
FSM	FSM	18	30%	21%	-	-	-	-
	Not FSM	42	70%	79%	-	-	-	-
Term of Birth	Summer Term	21	35%	34%	-	-	-	-
	Spring Term	20	33%	32%	-	-	-	-
	Autumn Term	19	32%	34%	-	-	-	-
SEN Group	SEN Support	3	5%	13%	-	-	-	-
	No SEN	57	95%	85%	-	-	-	-
EAL	First language not English	42	70%	24%	-	-	-	-
	First language English	18	30%	75%	-	-	-	-
Ethnicity	White	14	23%	69%	-	-	-	-
	Black Caribbean	8	13%	3%	-	-	-	-
	Black African	14	23%	6%	-	-	-	-
	Indian	2	3%	4%	-	-	-	-
	Pakistani	9	15%	6%	-	-	-	-
	Other Asian	2	3%	4%	-	-	-	-
	Chinese	2	3%	1%	-	-	-	-
	Any Other	9	15%	5%	-	-	-	-