

Self-evaluation Summary Dashboard

Produce custom dashboards
at fftaspire.org

Mellers Primary School

LA Nottingham City DFE 8922158 Produced October 2021

Reports

- Overview
- Attainment & Progress
- Pupil groups
- Subjects
- Disadvantaged pupils
- Scatterplot
- Context

What it tells you

- What are the strengths and weaknesses of your school?
- How does attainment and pupil progress at your school compare to the national average?
- How are you performing in different subjects?
- Do you have any under-performing groups of pupils?

About the data shown



Filters

No filters chosen (all pupils included)

You can use filters to view a subset of pupils



Indicators

% Expected standard+ (Re, Wr, Ma)

Average Scaled Score (Re, Ma)

2021 self-evaluation reports have been calculated using the teacher assessments provided by schools as part of the FFT End of Key Stage Assessment Service. ?

Mellers Primary School

2021 KS2

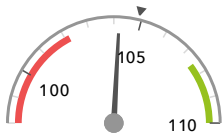
Overview

KS2 Attainment 2021 - Actual results

31 pupils

Average Scaled Score (Re, Ma)

104.2

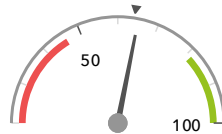


In line with the national average (104.9) ◀

% Expected standard+ (Re, Wr, Ma)

DFE

65%



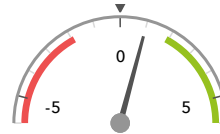
In line with the national average (64%) ◀

KS2 Progress 2021 - Value Added

30 matched pupils

Average Scaled Score (Re, Ma)

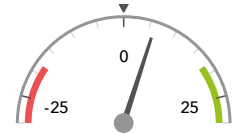
+1.0 ↓



In line with the national average (0) ◀

% Expected standard+ (Re, Wr, Ma)

+6%



In line with the national average (0%) ◀

KS2 higher and lower performing pupil groups 2021

Minimum group size: 5

	Higher performing	Lower performing
Overall achievement pupil progress	Black Caribbean (5) Spring Term (14) No SEN (28)	Autumn Term (5) ↓ Black African (6) Other Asian (6)
KS2 reading achievement pupil progress	Black Caribbean (5) Spring Term (14) First language English (13)	Black African (6) White (6) Summer Term (11)
KS2 writing achievement pupil progress	White (6) Black African (6) Lower attainers (7)	Other Asian (6) Female (16)
KS2 mathematics achievement pupil progress	First language not English (16) Summer Term (11) Spring Term (14)	Autumn Term (5) ↓ Other Asian (6)

2021 self-evaluation reports have been calculated using the teacher assessments provided by schools as part of the FFT End of Key Stage Assessment Service. ?

Mellers Primary School

2021 KS2

Attainment & progress

KS2 Attainment 2021

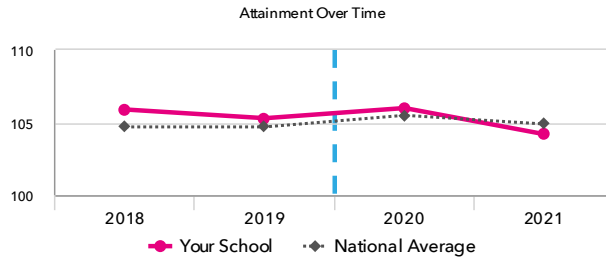
31 pupils

Average Scaled Score (Re, Ma)

104.2



In line with the national average (104.9)

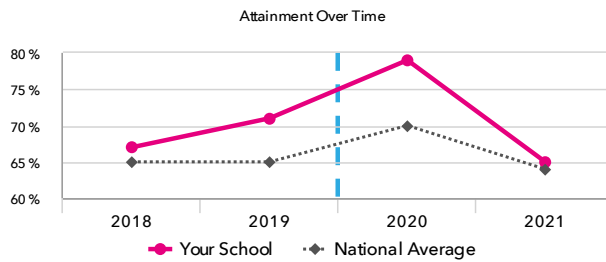


% Expected standard+ (Re, Wr, Ma) DFE

65%



In line with the national average (64%)



KS2 Progress 2021

30 matched pupils

Average Scaled Score (Re, Ma)

+1.0 ↓



In line with the national average (0)

% Expected standard+ (Re, Wr, Ma)

+6%



In line with the national average (0%)

KS2 performance summary

	Actual results			Pupil progress		
	2019	2020	2021	2019	2020	2021
Number of Pupils / % Matched	28	29	31	86%	86%	97%
% Expected standard+ (Re, Wr, Ma)	71%	79%	65%	+15%	+25% +	+6%
% Higher standard (Re, Wr, Ma)	4%	10%	6%	-5%	+7%	+1%
Average Scaled Score (Re, GPS, Ma)	105.6	106.1	104.2	+2.7 +	+3.0 +	+0.9 ↓
Average Scaled Score (Re, Ma)	105.3	106.0	104.2	+3.0 +	+3.3 +	+1.0 ↓
% Expected standard+ Reading	86%	83%	81%	+16%	+15%	+7%
% Higher standard Reading	29%	24%	16%	+10%	+10%	-6%
Scaled Score Reading	105.5	105.8	104.1	+4.0 +	+3.3 +	+0.8 ↓
% Expected standard+ Writing	82%	79%	65%	+4%	+19%	-3%
% Higher standard Writing	21%	10%	13%	+9%	+3%	+4%
Scaled Score Writing	101.3	105.3	104.1	+1.3	+3.3 +	+0.5 ↓
% Expected standard+ Maths	79%	86%	74%	+7%	+19% +	+6%
% Higher standard Maths	21%	17%	13%	-0%	+7%	-1%
Scaled Score Maths	105.1	106.3	104.2	+2.0	+3.2 +	+1.3
% Expected standard+ Grammar, Punctuation & Spelling	82%	79%	-	+6%	+15%	-
% Higher standard Grammar, Punctuation & Spelling	43%	10% - ↓	-	+15%	-5%	-
Scaled Score Grammar, Punctuation & Spelling	106.8	106.1	-	+2.8 +	+2.2	-
% Expected standard+ Science	75%	-	-	-	-	-

2021 self-evaluation reports have been calculated using the teacher assessments provided by schools as part of the FFT End of Key Stage Assessment Service. ?

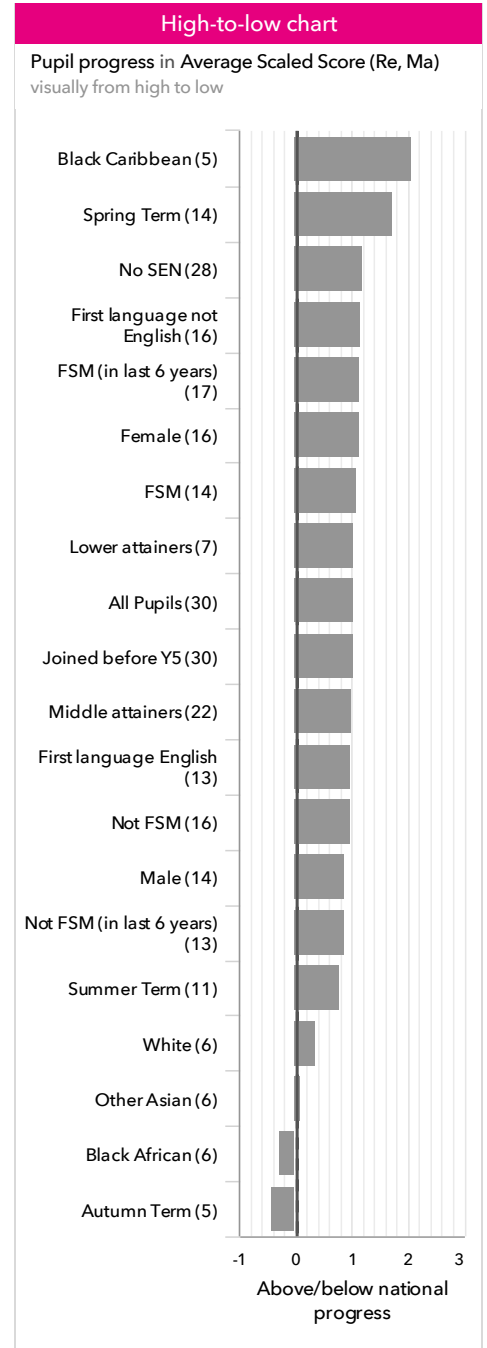
Mellers Primary School

2021 KS2

Pupil groups

KS2 Pupil groups performance 2021

	Pupils	Actual results		Pupil progress	
		Average Scaled Score (Re, Ma)	% Expected standard+ (Re, Wr, Ma) <small>DFE</small>	Average Scaled Score (Re, Ma)	% Expected standard+ (Re, Wr, Ma)
Summary	All Pupils	31	104.2	65%	+1.0 ↓ +6%
Gender	Male	14	105.5	71%	+0.9 ↓ +8%
	Female	17	103.1	59%	+1.1 +5%
FFT Prior Attainment	Higher attainers	1	113.5	100%	+1.2 +3%
	Middle attainers	22	106.6	82%	+1.0 +9%
	Lower attainers	7	96.5 ↓	14%	+1.0 -1%
Pupil Premium	FSM (in last 6 years)	18	103.1	56%	+1.1 ↓ +4%
	Not FSM (in last 6 years)	13	105.6	77%	+0.9 +10%
FSM	FSM	15	102.1	47%	+1.1 ↓ -1%
	Not FSM	16	106.1	81%	+1.0 +13%
Term of Birth	Autumn Term	5	107.2	80%	-0.4 ↓ -1%
	Spring Term	15	103.8	53%	+1.7 +3%
	Summer Term	11	103.3	73%	+0.8 +14%
SEN Group	SEN Support	2	100.3	50%	-1.5 -0%
	No SEN	29	104.4	66%	+1.2 ↓ +7%
EAL	First language not English	17	103.9	65%	+1.2 +8%
	First language English	13	104.4	62%	+1.0 ↓ +3%
Mobility	Joined before Y5	31	104.2	65%	+1.0 ↓ +6%
Ethnicity	White	6	100.5	50%	+0.4 +3%
	Black Caribbean	5	105.4	60%	+2.1 +1%
	Black African	7	105.1	86%	-0.3 +20%
	Pakistani	2	102.5	50%	+1.1 +5%
	Bangladeshi	2	105.5	50%	-0.3 -23%
	Other Asian	6	103.8	50%	+0.1 -11%
	Any Other	3	108.2	100%	+5.9 +49%



2021 self-evaluation reports have been calculated using the teacher assessments provided by schools as part of the FFT End of Key Stage Assessment Service. ?

Mellers Primary School

2021 KS2

Subjects

KS2 subject performance 2021

	Actual results			Pupil progress			Actual results over time
	2019	2020	2021	2019	2020	2021	
Number of Pupils / % Matched	28	29	31	86%	86%	97%	
Reading							
% Expected standard+	86%	83%	81%	+16%	+15%	+7%	
% Higher standard	29%	24%	16%	+10%	+10%	-6%	
Scaled Score	106	106	104	+4.0 +	+3.3 +	+0.8 ↓	
Writing							
% Expected standard+	82%	79%	65%	+4%	+19%	-3%	
% Higher standard	21%	10%	13%	+9%	+3%	+4%	
Scaled Score	101	105	104	+1.3	+3.3 +	+0.5 ↓	
Maths							
% Expected standard+	79%	86%	74%	+7%	+19% +	+6%	
% Higher standard	21%	17%	13%	-0%	+7%	-1%	
Scaled Score	105	106	104	+2.0	+3.2 +	+1.3	
Grammar, Punctuation & Spelling							
% Expected standard+	82%	79%	-	+6%	+15%	-	
% Higher standard	43%	10% ↓	-	+15%	-5%	-	
Scaled Score	107	106	-	+2.8 +	+2.2	-	
Science							
% Expected standard+	75%	-	-	-	-	-	

2021 self-evaluation reports have been calculated using the teacher assessments provided by schools as part of the FFT End of Key Stage Assessment Service. ?

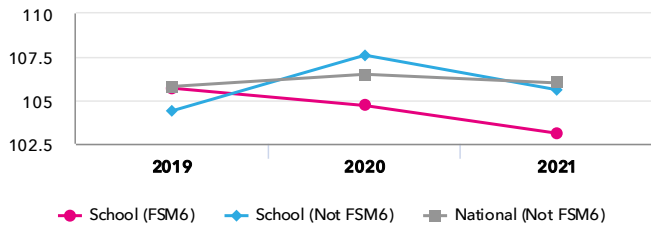
Mellers Primary School

2021 KS2

Disadvantaged pupils

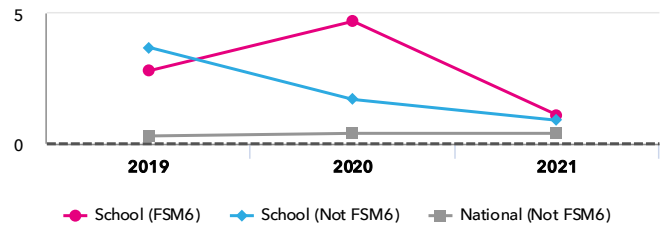
KS2 attainment for disadvantaged pupils 2021

Average Scaled Score (Re, Ma)



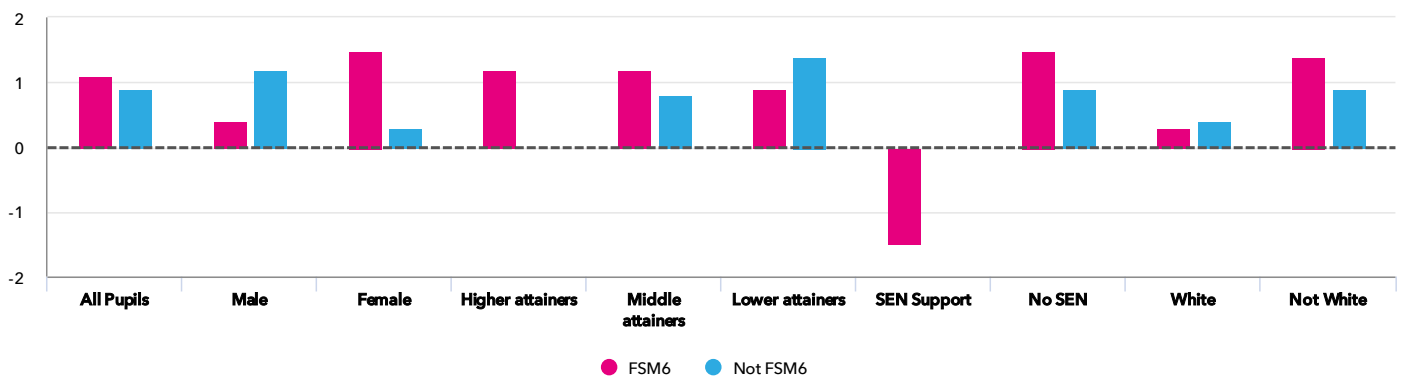
KS2 progress for disadvantaged pupils 2021

Average Scaled Score (Re, Ma)



Progress gap

Average Scaled Score (Re, Ma)



Attainment & progress

Pupils	Attainment			Progress					
	Average Scaled Score (Re, Ma)			Average Scaled Score (Re, Ma)					
	FSM6	Not FSM6	Gap	FSM6	Not FSM6	Gap			
Summary	All Pupils	18	13	103.1	105.6	-2.5	1.1 ↓	0.9	0.2
Gender	Male	6	8	104.4	106.3	-1.9	0.4	1.2	-0.8
	Female	12	5	102.5	104.5	-2	1.5	0.3	1.2
FFT Prior Attainment	Higher attainers	1	-	113.5	-	-	1.2	-	-
	Middle attainers	11	11	106.3	107	-0.7	1.2	0.8	0.4
	Lower attainers	5	2	95.8	98.3	-2.5	0.9	1.4	-0.5
SEN Group	SEN Support	2	-	100.3	-	-	-1.5	-	-
	No SEN	16	13	103.5	105.6	-2.1	1.5	0.9	0.6
Ethnic Group	White	4	2	96.9	107.8	-10.9	0.3	0.4	-0.1
	Not White	14	11	104.9	105.2	-0.3	1.4	0.9	0.5

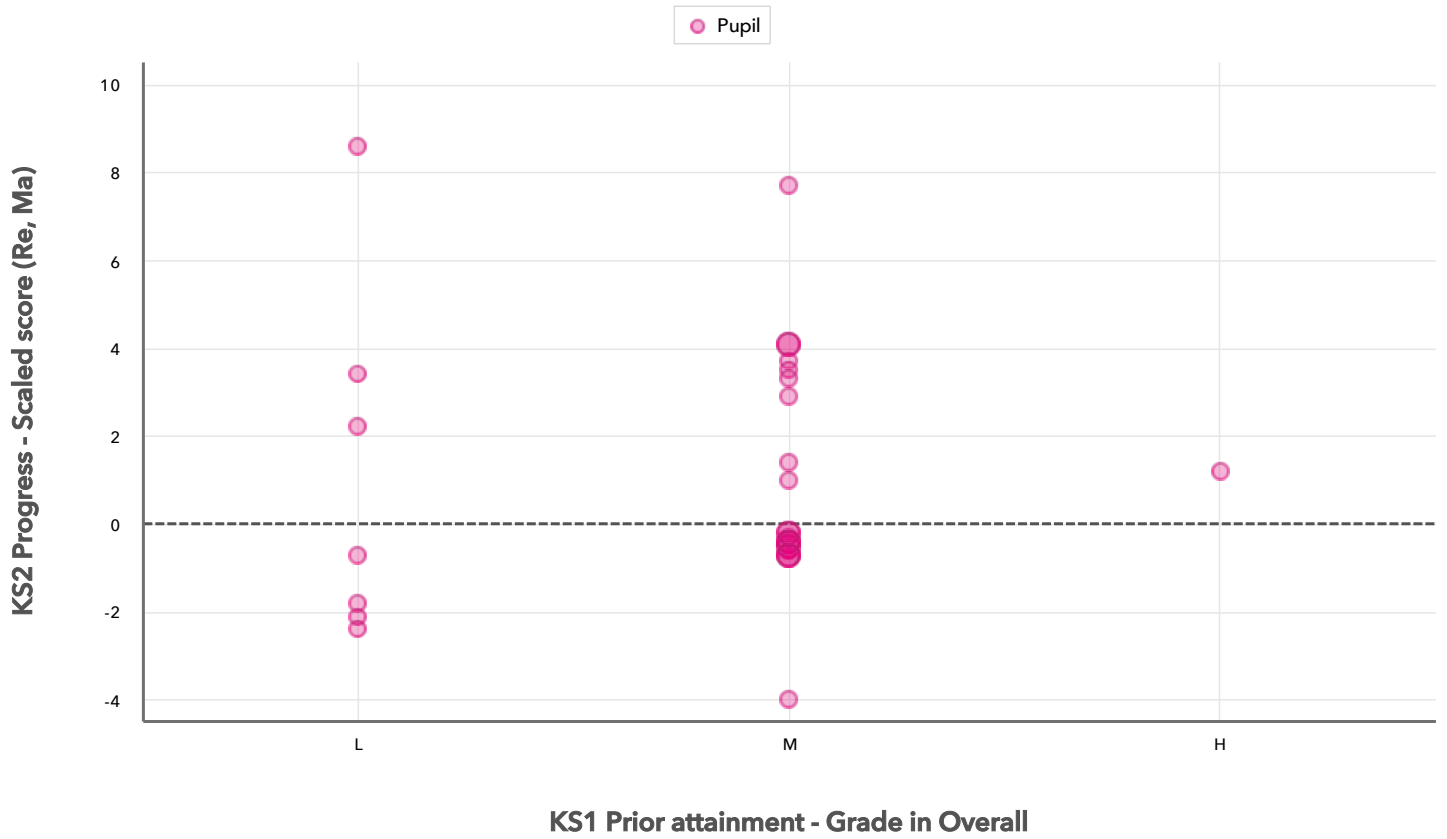
2021 self-evaluation reports have been calculated using the teacher assessments provided by schools as part of the FFT End of Key Stage Assessment Service. ?

Mellers Primary School

2021 KS2

Scatterplot

KS2 Pupil scatterplot 2021 31 pupils highlighted by All pupils ▾



Context data has been produced using the data supplied by schools as part of the FFT 2021 End of Key Stage Results Service. ?

Mellers Primary School

2021

KS2

Context

Context · Year 6

		Pupils	Comparative profile 2020 / 2021		Absence during Key Stage 2		Persistent absence during Key Stage 2	
		School	School	National	School	National	School	National
Summary	All Pupils	31	100%	100%	-	-	-	-
Gender	Male	14	45%	51%	-	-	-	-
	Female	17	55%	49%	-	-	-	-
FFT Prior Attainment	Higher attainers	1	3%	18%	-	-	-	-
	Middle attainers	22	71%	60%	-	-	-	-
	Lower attainers	7	23%	17%	-	-	-	-
Pupil Premium	FSM (in last 6 years)	18	58%	28%	-	-	-	-
	Not FSM (in last 6 years)	13	42%	71%	-	-	-	-
FSM	FSM	15	48%	24%	-	-	-	-
	Not FSM	16	52%	76%	-	-	-	-
Term of Birth	Autumn Term	5	16%	34%	-	-	-	-
	Spring Term	15	48%	33%	-	-	-	-
	Summer Term	11	35%	34%	-	-	-	-
SEN Group	SEN Support	2	6%	15%	-	-	-	-
	No SEN	29	94%	82%	-	-	-	-
EAL	First language not English	17	55%	25%	-	-	-	-
	First language English	13	42%	75%	-	-	-	-
Mobility	Joined before Y5	31	100%	94%	-	-	-	-
Ethnicity	White	6	19%	70%	-	-	-	-
	Black Caribbean	5	16%	3%	-	-	-	-
	Black African	7	23%	6%	-	-	-	-
	Pakistani	2	6%	5%	-	-	-	-
	Bangladeshi	2	6%	2%	-	-	-	-
	Other Asian	6	19%	4%	-	-	-	-
	Any Other	3	10%	5%	-	-	-	-