

Overview

KS2 Attainment 2022 · Actual results

56 pupils

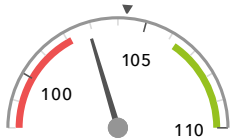
Average Scaled Score (Re, Ma)

% Expected standard+ (Re, Wr, Ma)

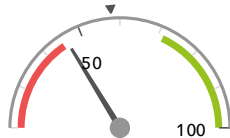
DFE

102.9

46%



In line with the national average (104.3) ◀



In line with the national average (58%) ◀

KS2 Progress 2022 · Value Added

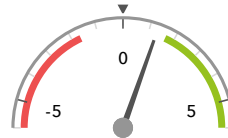
43 matched pupils

Average Scaled Score (Re, Ma)

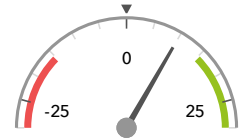
% Expected standard+ (Re, Wr, Ma)

+1.3

+10%



In line with the national average (0) ◀



In line with the national average (0%) ◀

KS2 higher and lower performing pupil groups 2022

Minimum group size: 5

	Higher performing	Lower performing
Overall achievement pupil progress	Spring Term (18) + First language not English (26) + Female (20) +	First language English (17) Black Caribbean (6) White (13)
KS2 reading achievement pupil progress	Spring Term (18) + Female (20) + SEN Support (8)	Summer Term (13) White (13)
KS2 writing achievement pupil progress	Female (20) + Black African (12) + Spring Term (18) +	SEN Support (8) White (13) Male (23)
KS2 mathematics achievement pupil progress	First language not English (26) Spring Term (18) Not FSM (in last 6 years) (13)	Black Caribbean (6) First language English (17) Autumn Term (12)
KS2 grammar, punctuation & spelling achievement pupil progress	Spring Term (18) + Black African (12) + Not FSM (ever) (12) +	White (13) SEN Support (8) First language English (17)

Census information

KS2's latest academic year uses the Spring 2022 DfE census – [learn more](#) · [See recent Aspire updates](#)